

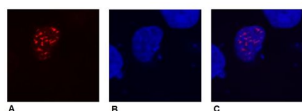
Product no **AS21 4619****DYKDDDDK (binds to Sigma FLAG®) (mouse monoclonal) (clone F-tag-01)**

## Product information

<b>Immunogen</b>	KLH-conjugated synthetic peptide: DYKDDDDK (Sigma FLAG®)
<b>Host</b>	Mouse
<b>Clonality</b>	Monoclonal
<b>Subclass/isotype</b>	IgG1
<b>Purity</b>	Immunoglobulin purified on Protein A in PBS pH 7.4. Contains 15 mM sodium azide.
<b>Format</b>	Liquid at 1 mg/ml.
<b>Quantity</b>	0.1 mg
<b>Storage</b>	Store at 2-8°C. Do not freeze. Do not use after expiration date stamped on the label. Please remember to spin the tubes briefly prior to opening them to avoid any losses that might occur from material adhering to the cap or sides of the tube.
<b>Additional information</b>	This antibody recognizes DYKDDDDK (Sigma FLAG®) tagged proteins

## Application information

<b>Recommended dilution</b>	1 µg/ml (WB)
<b>Confirmed reactivity</b>	DYKDDDDK (Sigma FLAG®) epitope tag
<b>Selected references</b>	To be added when available, antibody released in October 2021.



COS-7 cells transfected with expression constructs encoding fusion nuclear protein with DYKDDDDK (binds to Sigma FLAG®).

A - fusion nuclear protein (red) stained with anti-DYKDDDDK (binds to Sigma FLAG® monoclonal antibodies at 1 µg/ml, secondary antibody goat anti-mouse IgG1 Alexa Fluor® 594

B - cell nuclei stained with DAPI (blue)

C - merged figures - confirmation of nuclear localization of the fusion protein; cell nuclei stained with DAPI (blue)