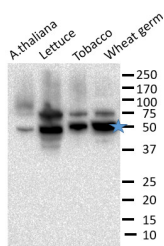


Product no **AS19 4251****eIF4A | Eukaryotic initiation factor eIF4A****Product information**

<b>Immunogen</b>	Recombinant eIF4A of <i>Triticum aestivum</i>
<b>Host</b>	Rabbit
<b>Clonality</b>	Polyclonal
<b>Purity</b>	Serum
<b>Format</b>	Lyophilized
<b>Quantity</b>	50 µl
<b>Reconstitution</b>	For reconstitution add 50 µl of sterile water
<b>Storage</b>	Store lyophilized/reconstituted at -20°C; once reconstituted make aliquots to avoid repeated freeze-thaw cycles. Please remember to spin the tubes briefly prior to opening them to avoid any losses that might occur from material adhering to the cap or sides of the tube.

**Application information**

<b>Recommended dilution</b>	1: 10 000 - 1 : 20 000 (WB)
<b>Expected   apparent MW</b>	47,2   50 kDa
<b>Confirmed reactivity</b>	<i>Arabidopsis thaliana</i> , <i>Lactuca sativa</i> , <i>Nicotiana benthamiana</i> , <i>Nicotiana tabacum</i> , <i>Triticum aestivum</i> , <i>Pisum sativum</i>
<b>Predicted reactivity</b>	<i>Aegilops tauschii</i> , <i>Actinidia chinensis</i> var. <i>chinensis</i> , <i>Albuca bracteata</i> , <i>Ananas comosus</i> , <i>Brachypodium distachyon</i> , <i>Carex duriuscula</i> subsp. <i>rigescens</i> , <i>Dichanthelium oligosanthes</i> , <i>Dorcocheras hygrometricum</i> , <i>Eleusine indica</i> , <i>Nicotiana benthamiana</i> , <i>Nicotiana sylvestris</i> , <i>Oryza sativa</i> subsp. <i>japonica</i> , <i>Panicum millaceum</i> , <i>Pennisetum americanum</i> , <i>Phoenix dactylifera</i> , <i>Setaria italica</i> , <i>Sorghum bicolor</i> , <i>Trema orientale</i> , <i>Triticum aestivum</i> , <i>Zea mays</i> Species of your interest not listed? <a href="#">Contact us</a>
<b>Selected references</b>	Li et al. (2021) Efficient and high-throughput pseudorecombinant-chimeric Cucumber mosaic virus-based VIGS in maize. <i>Plant Physiol.</i> 2021 Dec 4;187(4):2865-2876. doi: 10.1093/plphys/kiab443. PMID: 34606612; PMCID: PMC8644855.

**Application example**

Recommend incubation for 1 hr at room temperature in 5% non-fat dry milk in phosphate-buffer saline with 0.5% Tween-80 (PBST). Figure shows plant leaf extracts or wheat germ extract (5 µl of the supernatant of 50 mg liquid nitrogen powdered tissue/100 µl 2X SDS Laemmli buffer containing protease inhibitor crushed with a plastic pestle in a microfuge tube and centrifuged for 10 min at 4°C). Image shown is using Agrisera Anti-rabbit HRP (1/30,000) for 1 hr at RT in 5% non-fat dry milk in phosphate-buffer saline with 0.5% Tween-80 (PBST) and using Agrisera Ultra Bright substrate and exposed for 2 seconds in a BioRad ChemDoc on high resolution. Blue star indicates eIF4A band.

Courtesy Dr. Karen Browning, The University of Texas at Austin, USA