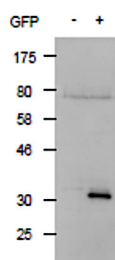


Product no **AS20 4512****Anti-EGFP, S65T-GFP, RS-GFP, YFP| Green Fluorescence Protein and its variants****Product information**

<b>Immunogen</b>	Recombinant, His-tagged EGFP protein from <i>Aequorea victoria</i> , UniProt: <a href="#">P42212</a>
<b>Host</b>	Rabbit
<b>Clonality</b>	Polyclonal
<b>Purity</b>	Serum. Contains 0.05 % sodium azide.
<b>Format</b>	Liquid
<b>Quantity</b>	100 µl
<b>Storage</b>	Store at -20°C, Avoid repeated freeze-thaw cycles. Please remember to spin the tubes briefly prior to opening them to avoid any losses that might occur from material adhering to the cap or sides of the tube.

**Application information**

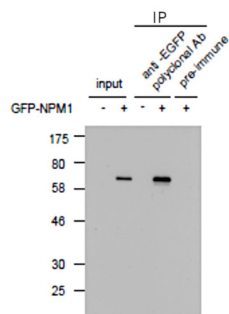
<b>Recommended dilution</b>	assay dependent (IP), 1 : 4000 (IF), 1 : 2000 (WB)
<b>Confirmed reactivity</b>	EGFP, S65T-GFP, RS-GFP, YFP
<b>Selected references</b>	<a href="#">Tatsumi et al. (2017)</a> . G196 epitope tag system: a novel monoclonal antibody, G196, recognizes the small, soluble peptide DLVPR with high affinity. <i>Sci Rep.</i> 2017 Mar 7;7:43480.doi: 10.1038/srep43480. (Immunofluorescence, Western blot)



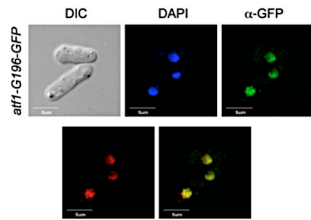
Lysate of 293T cells transfected with empty vector (left panel "-")  
 Lysate of 293T cells transfected with the plasmid carrying the GFP gene

Membrane for transfer: nitrocellulose.

Anti-GFP antibodies were used at 1 : 2000 dilution 1h/RT incubation in TBS-T. Followed by washes and incubation with secondary antibodies, HRP-conjugated and detection using chemiluminescence, following manufacture's recommendations.



-: Lysate of 293T cells transfected with an empty vector  
 +: Lysate of 293T cells transfected with carrying the GFP-tagged NPM1 gene



Immunofluorescence of GFP- and G196-tagged nuclear protein in fission yeast Atf1-G196-GFP expressing cells. Fixation: 3 % formaldehyde. Anti-GFP polyclonal antibodies: 1: 1000 over night incubation at RT, followed by incubation with Alexa-488 anti-rabbit secondary antibodies.