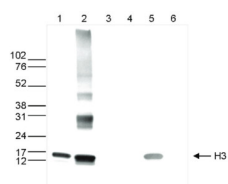


Product no **AS16 3197****Anti-H3 | Histone 3 core | (monoclonal)****Product information**

Immunogen	KLH-conjugated synthetic peptide containing an unmodified sequence from the C-terminus of the protein.
Host	Mouse
Clonality	Monoclonal
Purity	Protein A purified in PBS with 0.05 % sodium azide.
Format	Liquid
Quantity	50 µg
Storage	Store lyophilized/reconstituted at -20°C; once reconstituted make aliquots to avoid repeated freeze-thaw cycles. Please remember to spin the tubes briefly prior to opening them to avoid any losses that might occur from material adhering to the cap or sides of the tube.
Additional information	Antibody has been purified using Protein A. Antibody is provided in PBS containing 0.05% azide and 0.05% ProClin 300.

Application information

Recommended dilution	1-2 µg/IP (ChIP), 1 : 1000 (WB)
Expected apparent MW	15 kDa
Confirmed reactivity	Human
Predicted reactivity	<i>Solanum lycopersicum</i> , <i>Populus</i> sp., <i>Zea mays</i>
Not reactive in	No confirmed exceptions from predicted reactivity are currently known

application example

Western blot was performed on whole cell (25 µg, lane 1) and histone extracts (15 µg, lane 2) from HeLa cells, and on 1 µg of recombinant histone H2A, H2B, H3 and H4 (lane 3, 4, 5 and 6, respectively). The anti-H3 core antibody was diluted 1:1 000 in TBS-Tween containing 5% skimmed milk.