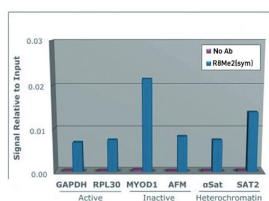
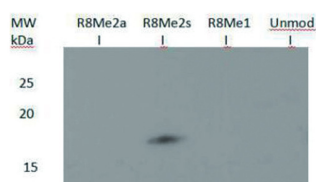


Product no **AS16 3178****Anti-H3R8me2(sym) | H3 Histone 3 (sym-dimethylated Arg8)****Product information****Immunogen** | KLH-conjugated synthetic peptide**Host** | Rabbit**Clonality** | Polyclonal**Purity** | Immunogen affinity purified serum.**Format** | Liquid**Quantity** | 50 µg**Storage** | Store lyophilized/reconstituted at -20°C; once reconstituted make aliquots to avoid repeated freeze-thaw cycles. Please remember to spin the tubes briefly prior to opening them to avoid any losses that might occur from material adhering to the cap or sides of the tube.**Additional information** | This antibody preparation is provided in 20 mM Potassium Phosphate pH 7,2, 150 mM NaCl, 0,01% sodium azide and 30% glycerol**Application information****Recommended dilution** | 2-5 µg/million cells (ChIP), 2 µg/ml (WB)**Expected | apparent MW** | 15 kDa**Confirmed reactivity** | *Caenorhabditis elegans*, Human**Predicted reactivity** | Chicken, *Drosophila melanogaster*, Mouse, Plant, Rat, *Xenopus sp.***Not reactive in** | No confirmed exceptions from predicted reactivity are currently known**application example**

Chromatin Immunoprecipitation using the H3R8me2(sym) antibody. Chromatin from one million formaldehyde cross-linked HeLa cells was used with 2 µg of H3R8me2(sym) to IP DNA from fixed HeLa cells alongside a no antibody (No Ab) control. DNA was measured by PCR and normalized to total input.

250>
150>
100>
75>
50>
37>
25>
20>
15>
10>

Western Blot using anti-H3R8me2(sym) antibodies. 30 µg *C. elegans* embryo lysate. Primary antibody: diluted 1:500 overnight at 4°C. Secondary antibody: IRDye800™ rabbit secondary antibody at 1:10 000 for 45 min at RT.



This product is **for research use only** (not for diagnostic or therapeutic use)

contact: support@agrisera.com

Agrisera AB | Box 57 | SE-91121 Vännäs | Sweden | +46 (0)935 33 000 | www.agrisera.com

Western Blot using anti-H3R8me2(sym) antibodies. Lane 1: R8Me2a. Lane 2: R8Me2s. Lane 3: R8Me1. Lane 4: Histone H3 R8. Load: 30 µg per lane. Primary antibody incubated at 2 µg/mL overnight at 4 °C. Secondary antibody IRDye800™ rabbit secondary antibody at 1:10 000 for 45 min at RT.