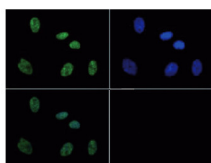


Product no **AS16 3179****Anti-H3S10pT11p | Histone H3 (p Ser10, p Thr11)****Product information****Immunogen** | KLH-conjugated synthetic peptide**Host** | Rabbit**Clonality** | Polyclonal**Purity** | Immunogen affinity purified serum.**Format** | Liquid**Quantity** | 50 µg**Storage** | Store lyophilized/reconstituted at -20°C; once reconstituted make aliquots to avoid repeated freeze-thaw cycles. Please remember to spin the tubes briefly prior to opening them to avoid any losses that might occur from material adhering to the cap or sides of the tube.**Additional information** | This antibody preparation is provided in 20 mM Potassium Phosphate pH 7,2, 150 mM NaCl, 0,01% sodium azide and 30% glycerol**Application information****Recommended dilution** | 2-5 µg/million cells (ChIP), 1 : 200 (IF), 1 : 200 (IHC), 1 : 500 (WB)**Expected | apparent MW** | 15 kDa**Confirmed reactivity** | *Caenorhabditis elegans*, Human**Predicted reactivity** | Chicken, *Drosophila melanogaster*, Mouse, Plant, Rat, *Xenopus sp.***Not reactive in** | No confirmed exceptions from predicted reactivity are currently known**application example**

**Immunofluorescence** using anti-H3S10pT11p antibodies. Tissue: HeLa cells. Fixation: 0.5% PFA. Primary antibody: H3S10pT11p antibody at a 1:200 dilution for 1 h at RT. Secondary antibody: FITC secondary antibody at 1:10 000 for 45 min at RT. Localization: H3S10pT11p is nuclear and chromosomal. Staining: H3S10pT11p is expressed in green, nuclei are counterstained with Dapi (blue).

250>  
150>  
100>  
75>  
50>  
37>  
25>  
20>  
15>  
10>

**Western Blot** using anti-H3S10pT11p antibodies. 30 µg *C. elegans* embryo lysate. Primary antibody: H3S10pT11p at a 1:500 dilution overnight at 4°C. Secondary antibody: IRDye800™ rabbit secondary antibody at 1:10,000 for 45 min at RT.

188 →  
98 →  
62 →  
45 →  
38 →  
28 →  
17 →  
14 →

← H3S10T11p

**Western Blot** using anti-H3S10pT11p antibodies. 30 µg HeLa histone extracts. Primary antibody: H3S10pT11p at a 1:500 dilution overnight at 4°C. Secondary antibody: IRDye800™ rabbit secondary antibody at 1:10 000 for 45 min at RT.