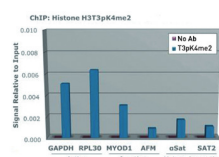
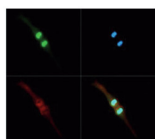
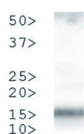


Product no **AS16 3169****Anti-H3T3pK4me2 | Histone H3 (dimethylated Lys4, p Thr3)****Product information****Immunogen** | KLH-conjugated synthetic peptide**Host** | Rabbit**Clonality** | Polyclonal**Purity** | Immunogen affinity purified serum.**Format** | Liquid**Quantity** | 50 µg**Storage** | Store lyophilized/reconstituted at -20°C; once reconstituted make aliquots to avoid repeated freeze-thaw cycles. Please remember to spin the tubes briefly prior to opening them to avoid any losses that might occur from material adhering to the cap or sides of the tube.**Additional information** | This antibody preparation is provided in 20 mM Potassium Phosphate pH 7,2, 150 mM NaCl, 0,01% sodium azide and 30% glycerol**Application information****Recommended dilution** | 2-5 µg/milion cells (ChIP), 1 : 1000 (Dot), 1 : 50 (IF), 1 : 50 (IHC), 1 : 500 (WB)**Expected | apparent MW** | 15 kDa**Confirmed reactivity** | Human**Predicted reactivity** | *Caenorhabditis elegans*, *Drosophila melanogaster*, Mouse, Plant, Rat, *Xenopus sp.***Not reactive in** | No confirmed exceptions from predicted reactivity are currently known**application example**

Chromatin Immunoprecipitation using H3T3pK4me2 antibodies. Chromatin from one million formaldehyde cross-linked HeLa cells was used with 2 µg of H3T3pK4me2 and 20 µl of magnetic beads per immunoprecipitation. A no antibody (No Ab) control was also used. Immunoprecipitated DNA was quantified using quantitative real-time PCR and normalized to the input chromatin.



Immunofluorescence using anti-H3T3pK4me2 antibodies. Tissue: HeLa cells. Fixation: 0.5% PFA. Primary antibody was used at a 1:50 dilution for 1 h at RT. Secondary antibody: Dylight® 488 secondary antibody at 1:10 000 for 45 min at RT. Localization: Histone H3T3pK4me2 is nuclear and chromosomal. Staining: H3T3pK4me2 is expressed in green while the nuclei and alpha-tubulin were coexpressed with DAPI (blue) and Dylight® 550 (red).



Western Blot using anti-H3T3pK4me2 antibodies. 30 µg of NIH-3T3 histone extracts. Primary antibody used at a 1:500 dilution overnight at 4°C.

Agrisera

Part of Olink® Group 

This product is **for research use only** (not for diagnostic or therapeutic use)

contact: support@agrisera.com

Agrisera AB | Box 57 | SE-91121 Vännäs | Sweden | +46 (0)935 33 000 | www.agrisera.com

Secondary antibody: IRDye800™ rabbit secondary antibody at 1:10 000 for 45 min at RT.