

Product no **AS07 260****Anti-H+ATPase | Plasma membrane H+ATPase (rabbit antibody)****Product information**

Immunogen	KLH-conjugated synthetic peptide, derived from available di and monocot, fern, mosses and algal plasma membrane ATPase sequences including <i>Arabidopsis thaliana</i> ATPase 1 (UniProt: P20649 , TAIR: At2g18960) and ATPase 2 (UniProt: P19456 , TAIR: At4g30190), 3 (UniProt: P20431 , TAIR: At5g57350), 4 (UniProt: Q9SU58 , TAIR: At3g47950), 6 (UniProt: Q9SH76 , TAIR: At2g07560), 7 (UniProt: Q9LY32 , TAIR: At3g60330), 8 (UniProt: Q9M2A0 , TAIR: At3g42640), 9 (UniProt: Q42556 , TAIR: At1g80660), 11 (UniProt: Q9LV11 , TAIR: At5g62670) of <i>Arabidopsis thaliana</i> and hydrogen ATPase of <i>Chlamydomonas reinhardtii</i> (Q9FNS3)
Host	Rabbit
Clonality	Polyclonal
Purity	Immunogen affinity purified serum in PBS pH 7.4.
Format	Lyophilized
Quantity	50 µg
Reconstitution	For reconstitution add 50 µl of sterile water
Storage	Store lyophilized/reconstituted at -20°C; once reconstituted make aliquots to avoid repeated freeze-thaw cycles. Please remember to spin the tubes briefly prior to opening them to avoid any losses that might occur from material adhering to the cap or sides of the tube. Do not Store this antibody in 4°C.
Additional information	Cellular [compartment marker] for plasma membrane

Application information

Recommended dilution	1 : 600-1 : 1000 (IF), 1 : 100 (IL), 1 : 1000-1 : 10 000 (WB)
Expected apparent MW	90-95 kDa (<i>Arabidopsis thaliana</i> , depending upon an isoform)
Confirmed reactivity	<i>Actinidia chinensis</i> , <i>Aesculus hippocastanum</i> , <i>Arabidopsis thaliana</i> , <i>Camellia sinensis</i> cv. Shu-chazao, <i>Chara australis</i> R.Br., <i>Chlamydomonas reinhardtii</i> , <i>Cucumis sativus</i> , <i>Cucurbita moschata</i> , <i>Glycine max</i> , <i>Kandelia obovata</i> , <i>Hordeum vulgare</i> , <i>Lolium perenne</i> , <i>Lycopersicon esculentum</i> , <i>Malus x domestica</i> Borkh. c.v. Fuji, <i>Marchantia polymorpha</i> , <i>Medicago truncatula</i> , <i>Nicotiana benthamiana</i> , <i>Nicotiana tabacum</i> , <i>Noccaea caerulescens</i> , <i>Oryza sativa</i> , <i>Petunia hybrida</i> , <i>Phalenopsis Sogo Yukidian cultivar V3</i> , <i>Physcomitrium patens</i> , <i>Picea abies</i> , <i>Pisum sativum</i> , <i>Populus tremula</i> , <i>Pteris vittata</i> (fern), <i>Ricinus communis</i> , <i>Salicornia bigelovii</i> , <i>Spinacia oleracea</i> , <i>Solanum lycopersicum</i> , <i>Tagetes erecta</i> , <i>Tetraselmis chuii</i> , <i>Vicia faba</i> , <i>Zea mays</i>
Predicted reactivity	<i>Amaranthus hypochondriacus</i> , <i>Avena sativa</i> , <i>Beta vulgaris</i> , <i>Citrus clementina</i> , <i>Cyanidioschyzon merolae</i> , <i>Dunaliella</i> spp., <i>Galdieria sulphuraria</i> , <i>Gossypium hirsutum</i> , <i>Hordeum vulgare</i> , <i>Ostreococcus</i> spp., <i>Pinus thunbergii</i> , <i>Physcomitrella patens</i> , <i>Mesembryanthemum crystallinum</i> , <i>Mortierella elongata</i> , <i>Nannochloropsis gaditana</i> CCMP526, <i>Ostreococcus tauri</i> , <i>Prosopis alba</i> , <i>Rosa chinensis</i> Jacq., <i>Saccharomyces cerevisiae</i> , <i>Solanum tuberosum</i> , <i>Sorghum bicolor</i> , <i>Spinacia oleracea</i> , <i>Triticum aestivum</i> , <i>Ulva prolifera</i> , <i>Ustilago maydis</i>
	Species of your interest not listed? Contact us
Not reactive in	<i>Allium</i> sp., <i>Aspergillus niger</i> , <i>Citrus limon</i> , <i>Colobanthus apetala</i> , <i>Cuminum cyminum</i> , <i>Curcuma amada</i> , <i>Deschampsia antractica</i> , <i>Lupinus luteus</i> , <i>Morinda citrifolia</i> , <i>Trigonella foenum</i> , <i>Vicia faba</i>
Additional information	VERY IMPORTANT: Please, do not heat up your samples above 70°C as this may cause H+ATPase to precipitate, and there will be no signal on your Western Blot. Before SDS-PAGE, centrifuge your samples at room temperature at 10 000 rpm/1 min to remove any aggregates. H+ATPase will be less abundant in mature roots and leaves and therefore detection may require use of very sensitive reagents. The 14 amino acid long peptide used to elicit this antibody is not derived from the extracellular domain. Therefore, this antibody is not applicable for flow cytometry. This product can be sold containing ProClin if requested.
Selected references	Konishi et al. (2025) . Role of polar localization of the silicon transporter OsLsi1 in metalloid uptake by rice roots. <i>Plant Physiol.</i> 2025 May 9:kiaf196.doi: 10.1093/plphys/kiaf196. Zhou et al. (2024) . Antagonistic systemin receptors integrate the activation and attenuation of systemic wound signaling

in tomato. *Dev Cell*. 2024 Nov 26;S1534-5807(24)00670-1. doi: 10.1016/j.devcel.2024.11.005.

[Jiang et al.](#) (2024). Dual function of overexpressing plasma membrane H⁺-ATPase in balancing carbon-water use. *Science Advances* Vol. 10, No. 45.

[Huang et al.](#) (2024). Insight into Function and Subcellular Localization of a Type III-Secreted Effector in *Pseudomonas syringae* pv. tomato DC3000. *American Journal of Plant Sciences* > Vol.15 No.10, October 2024.

[Salazar et al.](#) (2024). SOS1 tonoplast neo-localization and the RGG protein SALTY are important in the extreme salinity tolerance of *Salicornia bigelovii*. *Nat Commun*. 2024 May 20;15(1):4279. doi: 10.1038/s41467-024-48595-5.

[Mosesso et al.](#) (2024). Arabidopsis CaLB1 undergoes phase separation with the ESCRT protein ALIX and modulates autophagosome maturation. *Nat Commun*. 2024 Jun 19;15(1):5188. doi: 10.1038/s41467-024-49485-6.

[Li et al.](#) (2024). An NLR paralog Pit2 generated from tandem duplication of Pit1 fine-tunes Pit1 localization and function. *Nat Commun*. 2024 May 30;15(1):4610. doi: 10.1038/s41467-024-48943-5.

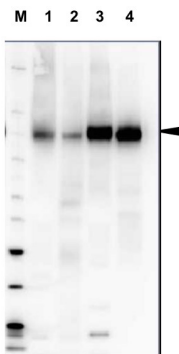
[Kimura and Kanegae](#) (2024). A phytochrome/phototropin chimeric photoreceptor promotes growth of fern gametophytes under limited light conditions. *Exp Bot*. 2024 Apr 15;75(8):2403-2416.

[Cha et al.](#) (2024). Arabidopsis COP1 guides stomatal response in guard cells through pH regulation. *Commun Biol*. 2024 Feb 5;7(1):150. doi: 10.1038/s42003-024-05847-w.

[Nadiminti et al.](#) (2023). Spatiotemporal Deposition of Cell Wall Polysaccharides in Oat Endosperm during Grain Development. *Plant Physiol*. 2023 Oct 20;194(1):168-189. doi: 10.1093/plphys/kiad566.

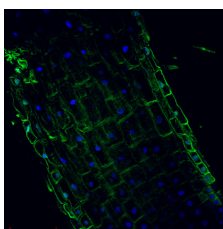
[Michalopoulou et al.](#) (2022) The host exocyst complex is targeted by a conserved bacterial type-III effector that promotes virulence. *Plant Cell*. 2022 May 30;koac162. doi: 10.1093/plcell/koac162. Epub ahead of print. PMID: 35640532.

[Hofmann, Wienkoop & Luthje](#) (2022) Hypoxia-Induced Aquaporins and Regulation of Redox Homeostasis by a Trans-Plasma Membrane Electron Transport System in Maize Roots. *Antioxidants (Basel)*. 2022 Apr 25;11(5):836. doi: 10.3390/antiox11050836. PMID: 35624700; PMCID: PMC9137787.



20 µg of total protein from *Arabidopsis thaliana* (1), *Hordeum vulgare* (2), *Zea mays* (3), *Nicotiana tabacum* plasma membrane fraction, 2.5 µg (4), extracted with Protein Extraction Buffer, PEB ([AS08 300](#), homogenate the tissue with 3 to 5 volumes of the homogenizing buffer), were denatured for 10 min. in 70°C and separated on 4-12% NuPage (Invitrogen) LDS-PAGE and blotted 1h to PVDF. Blots were blocked immediately following transfer in blocking reagent in 20 mM Tris, 137 mM sodium chloride pH 7.6 with 0.1% (v/v) Tween-20 (TBS-T) for 1h at room temperature with agitation. Blots were incubated in the primary antibody at a dilution of 1: 5 000 for 1h at room temperature with agitation. The antibody solution was decanted and the blot was rinsed briefly twice, then washed once for 15 min and 3 times for 5 min in TBS-T at room temperature with agitation. Blots were incubated in secondary antibody (anti-rabbit IgG horse radish peroxidase conjugated, recommended secondary antibody [AS09 602](#)) diluted to 1:20 000 in 2% blocking solution for 1h at room temperature with agitation. The blots were washed as above and developed for 5 min with chemiluminescence detection reagent according the manufacturers instructions. Images of the blots were obtained using a CCD imager (FluorSMax, Bio-Rad) and Quantity One software (Bio-Rad). Exposure time was 2 min.

Immunolocalization



Plasma membrane H⁺ATPase localization in *Arabidopsis thaliana* roots. *Arabidopsis thaliana*, elongation zone, H⁺ATPase (green). *Arabidopsis thaliana* roots were fixed in para-formaldehyde for 30 minutes. Tissue cleaning has been performed before immunolocalization. Anti-rabbit H⁺ATPase | plasma membrane primary antibody diluted in 1: 300 and anti-rabbit IgG secondary antibody conjugated with Alexa 555. Co-staining with DAPI visualized nucleus (blue color). Scale bar – 100 µm.



This product is **for research use only** (not for diagnostic or therapeutic use)

contact: support@agrisera.com

Agrisera AB | Box 57 | SE-91121 Vännäs | Sweden | +46 (0)935 33 000 | www.agrisera.com

Courtesy Dr. Taras Pasternak, Freiburg University, Germany