

Product no **AS18 4209-1ml**

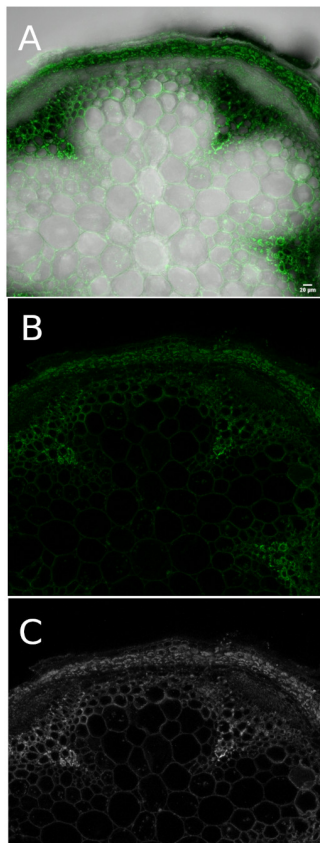
Anti-Heteromannan (monoclonal, clone LM21)

Product information

Immunogen	Polysaccharide Heteromannan
Host	Rat
Clonality	Monoclonal
Subclass/isotype	IgM
Purity	Cell culture supernatant.
Format	Liquid
Quantity	1 ml
Storage	Store at +4°C (short term) and at -20°C (long term).
Additional information	Contains 0.05% Sodium Azide. No cross-reactivity with other polymers This antibody recognises B-linked mannan polysaccharides of plant cell walls. LM21 binds effectively to B-(1-4)-manno-oligosaccharides from DP2 to DP5.

Application information

Recommended dilution	1:10 (ELISA, IF)
Confirmed reactivity	Higher plants, ferns and mosses
Not reactive in	No confirmed exceptions from predicted reactivity are currently known
Selected references	Albornos et al. (2025) . Reduction of galactose side chains in type II arabinogalactan alters homogalacturonan methyl esterification in <i>Arabidopsis thaliana</i> seed coat mucilage. <i>Planta</i> . 2025 May 24;262(1):4. doi: 10.1007/s00425-025-04717-x. Marcus et al. (2010) . Restricted access of proteins to mannan polysaccharides in intact plant cell walls. <i>Plant J</i> . 2010 Oct;64(2):191-203.doi:0.1111/j.1365-313X.2010.04319.x.



Type of material: Fresh *Arabidopsis thaliana* stem cut on vibratome after fixation

Fixation: paraformaldehyde (4%)

Hydrophilization: no

Cell wall digestion: no

Membrane permeabilization: no

Antigen retrieval: no

Blocking buffer: 5% milk in PBS

Washing buffer: 5% milk in PBS-T

Primary antibody dilution and incubation time: 1:20 incubation 90 minutes at room temperature

Secondary antibody dilution and incubation time and supplier: Thermo Fisher Goat anti-Rat IgG (H+L) Cross-Adsorbed Secondary Antibody, Alexa Fluor™ 633 (A-21094)

Co-staining of the nucleus (DAPI): no

Cell wall and nucleus staining: none

Courtesy of Dr. Jan Łyczakowski, Jagiellonian University, Kraków, Poland