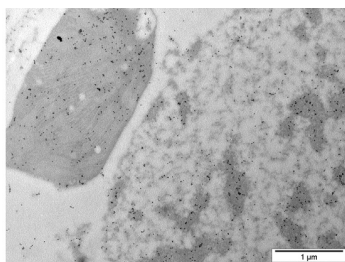


Product no **AS16 3953****WHIRLY1****Product information**

Immunogen	KLH-conjugated peptide derived from HvWHIRLY1 protein sequence, NCBI
Host	Goat
Clonality	Polyclonal
Purity	Immunogen affinity purified serum in PBS pH 7.4.
Format	Lyophilized
Quantity	50 µg
Reconstitution	For reconstitution add 50 µl, of sterile water
Storage	Lyophilized antibody can be stored at -20°C for up to 3 years. Re-constituted antibody can be stored at 4°C for several days to weeks. Once reconstituted make aliquots to avoid repeated freeze-thaw cycles. Please remember to spin the tubes briefly prior to opening them to avoid any losses that might occur from material adhering to the cap or sides of the tube.

Application information

Recommended dilution	1: 200 (IG)
Confirmed reactivity	<i>Hordeum vulgare</i>
Predicted reactivity	<i>Brachypodium sylvaticum</i> , <i>Oryza sativa</i> , <i>Panicum miliaceum</i> , <i>Setaria italica</i> , <i>Triticum urartu</i> Species of your interest not listed? Contact us
Not reactive in	No confirmed exceptions from predicted reactivity are currently known
Selected references	Karpinska et al. (2022). WHIRLY1 functions in the nucleus to regulate barley leaf development and associated metabolite profiles. <i>Biochem J.</i> 2022 Mar 18;479(5):641-659. doi: 10.1042/BCJ20210810. PMID: 35212355; PMCID: PMC9022988.

Application example

Material: Barley(flag leaves), fixed in 4% formaldehyde (from paraformaldehyde), embedded in LR White

Samples: Ultrathin sections on Au-Grids

Immunogold labelling:

1. Blocking 30 min RT in PBS (pH 7.4) + 0,2% BSA + 0,2 % fish gelatin (= blocking buffer) sterile filtrated
2. Incubation over night at 4°C anti-W1 (goat) 1:200 in blocking buffer
3. Washing: 4x 3 min PBS + 0,1 % BSA (= washing buffer)
4. Incubation 60 min RT, dilution: 1:50 in blocking buffer, rabbit anti-goat (10 nm gold) von Aurion (Code 810077)
5. Washing: 3x 5 min PBS
6. Washing 4x2 min mit A. millipore, staining in saturated aqueous uranyl acetate 10 mins

Courtesy of Dr. Karin Krupinska, Christian-Albrechts-Universität, Kiel, Germany