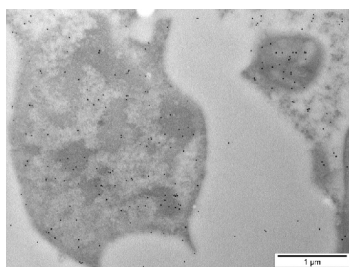


Product no **AS16 3952****Anti-WHIRLY2****Product information**

Immunogen	KLH-conjugated peptide derived from HvWHIRLY2 protein sequence, NCBI
Host	Chicken
Clonality	Polyclonal
Purity	Immunogen affinity purified IgY in PBS pH 8 with 0.02 % sodium azide.
Format	Liquid
Quantity	50 µg
Storage	Store at 4 °C; make aliquots to avoid working with a stock. Please remember to spin the tubes briefly prior to opening them to avoid any losses that might occur from material adhering to the cap or sides of the tube.

Application information

Recommended dilution	1: 100 (IG), 1: 1500 (WB)
Expected apparent MW	25 kDa
Confirmed reactivity	<i>Hordeum vulgare</i>
Predicted reactivity	<i>Brachypodium distachyon</i> , <i>Triticum urartu</i> Species of your interest not listed? Contact us
Not reactive in	<i>Glycine max</i>

Application example

Material: *Hordeum vulgare* (flag leaves), fixed in 4% formaldehyde (from paraformaldehyde), embedded in LR White Samples: Ultrathin sections on Au-Grids

Immunogold labelling:

1. Blocking 30 min RT in PBS (pH 7,4) + 0,2% BSA + 0,2 % fish gelatin (= blocking buffer) sterile filtrated
2. Incubation over night at 4 °C anti-WHIRLY2 (chicken antibodies) 1:100 in blocking buffer
3. Washing: 4x 3 min PBS + 0,1 % BSA (= washing buffer)
4. Incubation 60 min RT, dilution: 1:50 in blocking buffer, donkey anti-chicken (18 nm gold)
5. Washing: 3x 5 min PBS 6. Washing 4x2 min mit A. millipore, staining in saturated aqueous uranyl acetate 10 mins

Courtesy of Dr. Karin Krupinska, Christian-Albrechts-Universität, Kiel, Germany