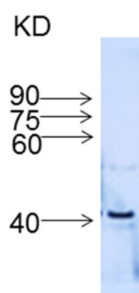


Product no **AS16 3847****Anti-IFR | isoflavone reductase****Product information**

|                       |  |
|-----------------------|--|
| <b>Immunogen</b>      | KLH-conjugated peptide derived from <i>Oryza sativa</i> UniProt: <a href="#">Q9FTN5</a> , LOC_Os01g01660.1   |
| <b>Host</b>           | Rabbit   |
| <b>Clonality</b>      | Polyclonal   |
| <b>Purity</b>         | Serum  |
| <b>Format</b>         | Lyophilized  |
| <b>Quantity</b>       | 50 µl  |
| <b>Reconstitution</b> | For reconstitution add 100 µl of sterile water   |
| <b>Storage</b>        | The antibody may be stored at -20°C for one year in its original formulation. Additionally, antibody may be stored at 2°C to 8°C for up to 1 month without detectable loss of activity. Avoid repeated freeze-thaw cycles of the diluted antibody. |

**Application information**

|                               |   |
|-------------------------------|---|
| <b>Recommended dilution</b>   | 1 : 500 (WB)  |
| <b>Expected   apparent MW</b> | 33   40 kDa   |
| <b>Confirmed reactivity</b>   | <i>Oryza sativa</i>   |
| <b>Predicted reactivity</b>   | <i>Oryza sativa</i>   |
| <b>Not reactive in</b>        | No confirmed exceptions from predicted reactivity are currently known |

**Application example**

50-100 µg of total protein from *Oryza sativa* cv. 9311 flag leaf at maturing stage, extracted with protein extraction reagent were separated on 15% SDS-PAGE and blotted 1h to PVDF using wet transfer. Blots were blocked with 1×TBST+5% Nonfat dry milk for 1h at 37 °C with agitation. Blot was incubated in the primary antibody at a dilution of 1: 500 in 1×TBST+5% Nonfat dry milk for 1h at RT with agitation. The antibody solution was decanted and the blot was rinsed briefly twice, then washed once for 15 min and 3 times for 5 min in TBS-T at RT with agitation. Blot was incubated in secondary antibody (anti-rabbit IgG horse radish peroxidase conjugated) diluted to 1:15 000 in 1× TBST + 5% Nonfat dry milk for 2h at RT with agitation. The blot was washed as above and developed for 5 min with ECL according to the manufacturer's instructions. Exposure time was 10-20 seconds.