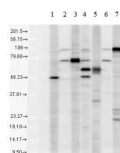


Product no **AS13 2665****Anti-KDEL | Endoplasmic reticulum retention signal****Product information****Immunogen** | KDEL containing peptide**Host** | Rabbit**Clonality** | Polyclonal**Purity** | Total IgG. Protein A purified in PBS pH 7.2. Contains 50% glycerol and 0.09% sodium azide.**Format** | Liquid**Quantity** | 50 µg (1 mg/ml)**Storage** | Store at -20 °C for 1 year; make aliquots to avoid repeated freeze-thaw cycles.**Additional information** | Immunogen affinity purified antibodies are present in PBS, pH 7,4 with 0,09 % sodium azide and 50 % glycerol,**Application information****Recommended dilution** | 1 : 1000 (WB)**Confirmed reactivity** | Human, Mouse, Rat**Not reactive in** | No confirmed exceptions from predicted reactivity are currently known**application example**

1. PDI control antibody  
 2. KDEL control antibody clone 10C3  
 3. Qp74 control antibody  
 4. SPC-100  
 5. Calreticulin control antibody  
 6. KDEL control antibody clone 10C3  
 7. Qp74 control antibody  
 Mixed human cell lysate (100µg/pul), 1:1000 dilutions;  
 KDEL(10C3) control antibody 1:500 dilution