

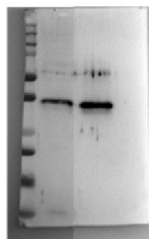
Product no **AS21 4596****Anti-LEA6 | Late embryogenesis abundant protein 6****Product information**

Immunogen	KLH-conjugated peptide derived from <i>Arabidopsis thaliana</i> LEA6 protein sequences, UniProt: Q64820 , TAIR: At2g23110, UniProt: Q8S8R1 TAIR: AT2G23120 and UniProt: Q23658 , TAIR: AT2G33690
Host	Rabbit
Clonality	Polyclonal
Purity	Affinity purified serum, in PBS pH 7.4
Format	Lyophilized
Quantity	50 µg
Reconstitution	For reconstitution add 50 µl, of sterile or deionized water.
Storage	Store lyophilized/reconstituted at -20 °C; once reconstituted make aliquots to avoid repeated freeze-thaw cycles. Please, remember to spin tubes briefly prior to opening them to avoid any losses that might occur from lyophilized material adhering to the cap or sides of the tubes.

Application information

Recommended dilution	1 : 1000 (WB)
Confirmed reactivity	<i>Arabidopsis thaliana</i> (recombinant LEA6)
Predicted reactivity	Species of your interest not listed? Contact us
Not reactive in	No confirmed exceptions from predicted reactivity are currently known
Additional information	Antibody reactivity in endogenous sample remains to be determined.
Selected references	To be added when available, antibody available in October 2022.

M 1 2

**Samples:**

M - Precision plus protein dual colour standard Bio-Rad

1 - Bacterial extract, 4 µl

2 - Purified, His-tagged *Arabidopsis thaliana* LEA 16 protein, 8 µl

Samples were denatured with SDS DTT sample buffer (12 mM Tris pH 6.8, 10 % glycerol, 0.4 % SDS, 80 mM DTT, 0.02 % bromophenol blue) for 30 min at room temperature, then were separated on 12 % SDS-PAGE and blotted 1h at 100 V to PVDF membrane (pore size of 0.2 µm), using wet transfer (10 mM CAPS pH 11, 20% MeOH). Blot was blocked with 5% milk in TBS 0.1 % Tween20 for 1h/RT with agitation. Blot was incubated in the primary antibody at a dilution of 1: 1 000 overnight/4 °C in TBS 0.1 % Tween 20 without agitation. The antibody solution was decanted, and the blot was rinsed briefly twice, then washed 2 times for 30 min in TBS-T at RT with agitation. Blot was incubated in Agrisera matching secondary antibody (anti-rabbit IgG horse radish peroxidase conjugated) diluted to 1:25 000 in 25 mL of TBS 0.1 % Tween20 for 1h/RT with agitation. The blot was washed as above and developed for 5 min with Bio-Rad Clarity western ECL substrate. Exposure time was 60 seconds.

Note: The apparent molecular mass (32-34 kDa) is 4 times higher than expected (8 kDa). This is consistent with publications that reported the aberrant behavior of some LEA proteins in SDS-PAGE.

Courtesy of Dr. David Macherel, IRHS/Seedling Metabolism & Stress, France