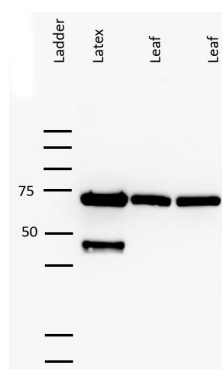


Product no **AS15 2862****Anti-Linamarase****Product information**

<b>Immunogen</b>	KLH-conjugated synthetic peptide derived from <i>Manihot esculenta</i> linamarase protein sequence, UniProt: <a href="#">Q24524</a>
<b>Host</b>	Rabbit
<b>Clonality</b>	Polyclonal
<b>Purity</b>	Serum
<b>Format</b>	Lyophilized
<b>Quantity</b>	50 µl
<b>Reconstitution</b>	For reconstitution add 50 µl, of sterile water.
<b>Storage</b>	Lyophilized antibody can be stored at -20 °C for up to 3 years. Re-constituted antibody can be stored at 4 °C for several days to weeks. Once reconstituted make aliquots to avoid repeated freeze-thaw cycles. Please, remember to spin tubes briefly prior to opening them to avoid any losses that might occur from lyophilized material adhering to the cap or sides of the tubes.

**Application information**

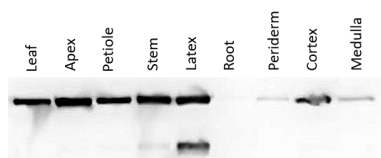
<b>Recommended dilution</b>	1: 1000 (WB)
<b>Expected   apparent MW</b>	59 kDa
<b>Confirmed reactivity</b>	<i>Manihot esculenta</i>
<b>Predicted reactivity</b>	Species of your interest not listed? <a href="#">Contact us</a>
<b>Not reactive in</b>	no confirmed exceptions from predicted reactivity are currently known
<b>Selected references</b>	to be added when available, antibody released in December 2022.

**Samples:**

Latex - approximately 20 µl dissolved in 200 µl of extraction buffer

Leaf (cassava) - 2 leaf discs (A=78.5 mm<sup>2</sup>), snap frozen in liquid nitrogen and homogenized with pestil in 200 µl extraction buffer

10 µl of extract, is mixed with sample buffer (BioRadXT), reducing agent (BioRadXT) and milliQ water to a final volume of 35 µl - 30 µl of this extract is separated on 12 % Bis-Tris (BioRad Criterion) gel and run at 200 V for 1h in XT MOPS buffer. Blotting is done to PVDF membrane with BioRad Criterion, 100 V/30 min. Membranes are blocked in 5 % non-fat milk for 1h/RT followed by primary antibody incubation at 1: 1000 in 5 % non-fat milk in PBS-T for 1h/RT. Membrane is washed in PBS-T, 3x10 min. and incubated in anti-rabbit HRP conjugated secondary antibodies in PBS-T with 5 % non-fat milk for 2h/RT. Following the wash in PBS-T for 3x 10 min. signal is developed with chemiluminescent detection reagent and recorded by a CCD camera.



Linamarase was analyzed in multiple tissues by Western blot, using protocol described above.