

Product no **AS17 4121****Anti-m6A | N6-methyladenosine (polyclonal)****Product information**

Immunogen	LPH (<i>Limulus polyphemus</i> hemocyanin)- conjugated N6-methyladenosine (m6A)
Host	Rabbit
Clonality	Polyclonal
Purity	Total IgG. Protein G purified.
Format	Liquid
Quantity	50 µg
Storage	Store lyophilized/reconstituted at -20°C; for long term storage -80°C is recommended; once reconstituted make aliquots to avoid repeated freeze-thaw cycles. Please remember to spin the tubes briefly prior to opening them to avoid any losses that might occur from material adhering to the cap or sides of the tube.

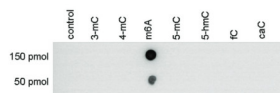
Additional information | This antibody is purified on Protein A and provided in PBS pH 7,4 with 0,05 % sodium azide and 0,05 % ProClin300

Application information

Recommended dilution | 1 : 400 (Dot)

Confirmed reactivity | Human, Mouse and other species

Not reactive in | No confirmed exceptions from predicted reactivity are currently known

Application example

Dot blot: using anti-m6A rabbit polyclonal antibody with synthetic peptides containing different modified bases in a range from 50 to 150 pmol) which were spotted on a membrane (Amersham Hybond-N+). The membrane was incubated with the mouse anti-m6A polyclonal antibody (dilution 1:400) in TBS-T with a 1 % non-fat-dry milk.