

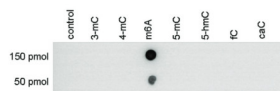
Product no **AS17 4121****Anti-m6A | N6-methyladenosine (polyclonal)****Product information**

<b>Immunogen</b>	LPH ( <i>Limulus polyphemus</i> hemocyanin)- conjugated N6-methyladenosine (m6A)
<b>Host</b>	Rabbit
<b>Clonality</b>	Polyclonal
<b>Purity</b>	Total IgG. Protein G purified.
<b>Format</b>	Liquid
<b>Quantity</b>	50 µg
<b>Storage</b>	Store lyophilized/reconstituted at -20°C; for long term storage -80°C is recommended; once reconstituted make aliquots to avoid repeated freeze-thaw cycles. Please remember to spin the tubes briefly prior to opening them to avoid any losses that might occur from material adhering to the cap or sides of the tube.

**Additional information** | This antibody is purified on Protein A and provided in PBS pH 7,4 with 0,05 % sodium azide and 0,05 % ProClin300

**Application information**

<b>Recommended dilution</b>	1 : 400 (Dot)
<b>Confirmed reactivity</b>	Human, Mouse and other species
<b>Not reactive in</b>	No confirmed exceptions from predicted reactivity are currently known

**Application example**

**Dot blot:** using anti-m6A rabbit polyclonal antibody with synthetic peptides containing different modified bases in a range from 50 to 150 pmol) which were spotted on a membrane (Amersham Hybond-N+). The membrane was incubated with the mouse anti-m6A polyclonal antibody (dilution 1:400) in TBS-T with a 1 % non-fat-dry milk.