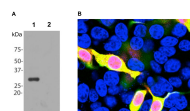


Product no **AS18 4179****Anti-mCherry (rabbit antibody)****Product information**

Immunogen	Recombinant full length mCherry expressed and purified from <i>E. coli</i> .
Host	Rabbit
Clonality	Polyclonal
Purity	Immunogen affinity purified in PBS pH 7.4, with 3% trehalose.
Format	Lyophilized
Quantity	100 µg
Reconstitution	For reconstitution add 100 µl of sterile water
Storage	Store lyophilized/reconstituted at -20°C; once reconstituted make aliquots to avoid repeated freeze-thaw cycles. Please remember to spin the tubes briefly prior to opening them to avoid any losses that might occur from material adhering to the cap or sides of the tube.

Application information

Recommended dilution	1 : 250-1 : 500 (ICC), 1 : 500-1 : 1000 (WB)
Confirmed reactivity	mCherry
Predicted reactivity	mScarlett
Additional information	In western blot ~28 kDa band is detected corresponding to intact full-length mCherry on HEK293 cells transfected with mCherry vector. Sequence identity between mCherry and original GFP protein is 27%. Antibody does not cross with GFP or eGFP and likely not any of the relatives in western blot.
Selected references	Song et al. (2024) . Substrate-induced condensation activates plant TIR domain proteins. <i>Nature</i> . 2024 Mar 13. doi: 10.1038/s41586-024-07183-9.

application example

A: Western blot of HEK293 cells transfected with pFin-EF1-mCherry vector. Transfected cells (1). Non-transfected control cells (2).

B: Immunofluorescence analysis of mCherry-transfected HEK293 cells using anti-mCherry (AS18 4179).