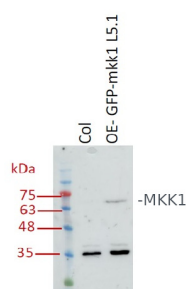


Product no **AS15 2904****Anti-MKK1 | Mitogen-activated protein kinase kinase 1****Product information**

| | |
|-----------------------|--|
| Immunogen | KLH-conjugated synthetic peptide derived from <i>Arabidopsis thaliana</i> MKK1 protein sequence, UniProt: Q94A06 GeneID: AT4G26070 |
| Host | Rabbit |
| Clonality | Polyclonal |
| Purity | Serum |
| Format | Lyophilized |
| Quantity | 100 µg |
| Reconstitution | For reconstitution add 200 µl of sterile water. |
| Storage | Store lyophilized/reconstituted at -20 °C; once reconstituted make aliquots to avoid repeated freeze-thaw cycles. Please, remember to spin tubes briefly prior to opening them to avoid any losses that might occur from lyophilized material adhering to the cap or sides of the tubes. |

Application information

| | |
|-------------------------------|--|
| Recommended dilution | 1: 1000 (WB) |
| Expected apparent MW | 28 30 kDa |
| Confirmed reactivity | <i>Arabidopsis thaliana</i> recombinant MKK1 |
| Predicted reactivity | <i>Hordeum vulgare</i> , <i>Musa sp.</i> , <i>Oryza sativa</i> , <i>Phaseolus vulgaris</i> , <i>Physcomitrium patens</i> , <i>Solanum tuberosum</i> , <i>Ricinus communis</i> , <i>Triticum aestivum</i> , <i>Zea mays</i> |
| Not reactive in | <i>Ostreococcus tauri</i> |
| Additional information | This antibody is recognizing recombinant MKK1 of <i>Arabidopsis thaliana</i> . Reactivity on endogenous extract remains to be determined. |
| Selected references | To be added when available, antibody released in February 2026. |

**Samples:**Col - *Arabidopsis thaliana* wild typeOE-GFP-MKK1 - *Arabidopsis thaliana* overexpressing MKK1 tagged with GFP

20 µg of total protein extracted freshly from 7 days-old *Arabidopsis thaliana* seedlings with Lysis buffer (25 mM Tris-HCl pH 7.5, NaCl 150 mM, 1% Nonidet, 0.1% SDS and Protease inhibitor cocktails) and denatured with Laemmli buffer at 75°C for 10 min. The samples were separated on 10% SDS-PAGE and blotted 1h to nitrocellulose (pore size: 0.45 µm) using wet transfer. Blot was blocked with 5% milk for RT/ 1h with agitation. Blot was blocked in the primary antibody at a dilution of 1: 500 for 4°C/ON with agitation in PBS-T. The antibody solution was decanted, and the blot was rinsed briefly twice, then washed once for 10 min and 5 times for 10 min in PBS-T at RT with agitation. Blot was incubated in Agrisera matching secondary antibody (anti-rabbit IgG horse radish peroxidase conjugated, [AS09 602](#)) diluted to 1: 25 000 for 1h/RT with agitation. The blot was washed as above and developed for 5 min with Agrisera ECLBright. Exposure time was 30 seconds.

Conditions for MKK1 detection in wild type samples need to be determined. Suggested is: increased protein load/well to 50 µg combined with primary antibody incubation 4°C/ON and detection reagent of highest sensitivity.