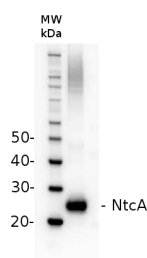


Product no **AS12 1873****Anti-NtcA | Global nitrogen regulator****Product information**

Immunogen	KLH-conjugated synthetic peptide derived from known cyanobacterial NtcA protein sequences including UniProt: P33779
Host	Rabbit
Clonality	Polyclonal
Purity	Immunogen affinity purified serum in PBS pH 7.4.
Format	Lyophilized
Quantity	200 µg
Reconstitution	For reconstitution add 100 µl of sterile water
Storage	Store lyophilized/reconstituted at -20°C; once reconstituted make aliquots to avoid repeated freeze-thaw cycles. Please remember to spin the tubes briefly prior to opening them to avoid any losses that might occur from material adhering to the cap or sides of the tube.

Application information

Recommended dilution	1 : 1000 (WB)
Expected apparent MW	25 kDa
Confirmed reactivity	<i>Synechocystis</i> sp. PCC6803
Predicted reactivity	<i>Anabaena</i> sp., <i>Gleobacter</i> sp., <i>marine Synechococcus</i> strains, <i>Trichodesmium</i> sp. Species of your interest not listed? Contact us
Not reactive in	No confirmed exceptions from predicted reactivity are currently known
Selected references	Ge et al. (2017). Translating Divergent Environmental Stresses into a Common Proteome Response through the Histidine Kinase 33 (Hik33) in a Model Cyanobacterium. <i>Mol Cell Proteomics</i> . 2017 Jul;16(7):1258-1274. doi: 10.1074/mcp.M116.068080.

application example

5 µg of total protein from *Synechocystis* sp. PCC 6803 extracted with [PEB](#) were separated on **4-12 % SDS-PAGE** and blotted 1h to **PVDF**. Blots were blocked for 1h at room temperature (RT) with agitation. Blot was incubated in the primary antibody at a dilution of 1: 1 000 for 1h at RT with agitation. The antibody solution was decanted and the blot was rinsed briefly twice, then washed once for 15 min and 3 times for 5 min in TBS-T at RT with agitation. Blot was incubated in secondary antibody (anti-rabbit IgG horse radish peroxidase conjugated, from Agrisera, [AS09 602](#)) diluted to 1:25 000 in for 1h at RT with agitation. The blot was washed as above and developed for 5 min with ECL according to the manufacturers instructions. Exposure time was 32 seconds.