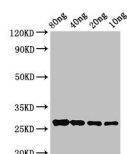


Product no **AS19 4348****Anti-OLE9 | Major pollen allergen Ole e 9****Product information**

<b>Immunogen</b>	Recombinant <i>Olea europaea</i> Glucan endo-1,3-beta-D-glucosidase protein, amino acids: 360-460, UniProt: <a href="#">Q94G86</a>
<b>Host</b>	Rabbit
<b>Clonality</b>	Polyclonal
<b>Purity</b>	Total IgG. Protein G purified.
<b>Format</b>	Liquid
<b>Quantity</b>	50 µg
<b>Storage</b>	Store at -20 °C or -80 °C, avoid repeated freeze-thaw cycles. Make aliquots to avoid repeated freeze-thaw cycles. Please remember to spin the tubes briefly prior to opening them to avoid any losses that might occur from material adhering to the cap or sides of the tube.

**Additional information** Preservative: 0.03% Proclin 300, Preparation contains: 50% Glycerol, 10 mM PBS, pH 7.4**Application information****Recommended dilution** 1 : 1000 (WB)**Expected | apparent  
MW** 48.8 kDa**Confirmed reactivity** *Olea europaea***Application example**

Varied amounts of recombinant OLE9 protein were loaded/well and separated on 10 % SDS-PAGE and blotted 1h to PVDF (0.45 µm) using semi-dry transfer. Blot was blocked with 5 % milk for 2h/RT with agitation. Blot was incubated in the primary antibody at 2.8 µg/ml for 1h/RT with agitation in PBS-T. The antibody solution was decanted and the blot was rinsed briefly twice, then washed 4x in PBS-T at RT with agitation. Blot was incubated in matching secondary antibody (anti-rabbit IgG horse radish peroxidase conjugated) diluted to 1:50 000 in for 1h/RT with agitation. The blot was washed as above and developed with chemiluminescent detection reagent according to manufacture's instructions.