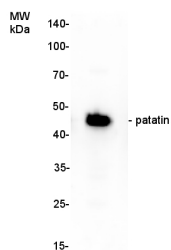


Product no **AS12 1842****Anti-Patatin****Product information**

Immunogen	KLH-conjugated synthetic peptide derived from a C-terminal part of 36 known isoforms of patatin from <i>Solanum tuberosum</i> including: <u>Q3YJS9</u> , <u>Q3YJT0</u> , <u>Q42502</u> , <u>Q3YJT2</u>
Host	Rabbit
Clonality	Polyclonal
Purity	Serum
Format	Lyophilized
Quantity	100 µl
Reconstitution	For reconstitution add 100 µl of sterile water
Storage	Store lyophilized/reconstituted at -20 °C; once reconstituted make aliquots to avoid repeated freeze-thaw cycles. Please remember to spin the tubes briefly prior to opening them to avoid any losses that might occur from material adhering to the cap or sides of the tube.

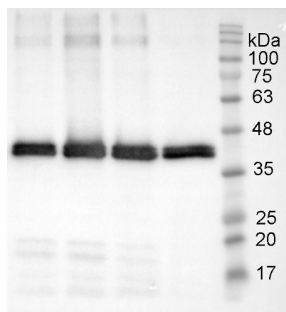
Application information

Recommended dilution	1 : 100 (IL), 1 : 2000 (WB)
Expected apparent MW	40-42 kDa
Confirmed reactivity	<i>Solanum tuberosum</i>
Predicted reactivity	<i>Solanum tuberosum</i>
Not reactive in	No confirmed exceptions from predicted reactivity are currently known

application example

75 µg of total protein from *Solanum tuberosum* v. Nicola extracted with 20 mM TRIS PH-8.5, 10 mM thiourea, 10 mM CaCl₂, 5 mM DTT, 1 mM PMSF, 1% PVPP were separated on 4-20 % SDS-PAGE and blotted 1.5h to **PVDF**. Blots were blocked with 5% milk powder in T-TBS (2.5gr of powder in 50 ml T-TBS) for 1h at room temperature (RT) with agitation. Blot was incubated in the primary antibody at a dilution of 1: 2 000 for overnight at 4 °C with agitation. The antibody solution was decanted and the blot was washed 6 times for 5 min. in TBS-T at RT with agitation. Blot was incubated in secondary antibody (anti-rabbit IgG horse radish peroxidase conjugated, from Agrisera, AS09 6021) diluted to 1:10 000 in blocking solution for 1h at RT with agitation. The blot was washed as above and developed for 5 min with ECL according to the manufacturer's instructions. Exposure time was 30 seconds.

Courtesy of Dr. Paula Teper-Bamnolker and Dr. Dani Eshel, The Volcani Center, Israel



Proteins were extracted from tuber flesh of Russet Burbank with 0.1 M Tris HCl (pH=8.0), 5% sucrose (m/v), 2% (m/v) SDS, protease inhibitors (PMSF 1mM). Samples were heated 95°C 5 min, and 1 µg of total protein was resolved in 12% SDS PAGE and blotted to PVDF membrane for 1h-1.5h. Blocking with a 4% skimmed milk in T-TBS (1.5h). Primary antibodies were applied overnight +4 °C in dilution 1:2000. After washing with T-TBS 2-3 times, membrane was incubated with secondary antibodies (Goat Anti-Rabbit HRP conjugate) 1:10 000 for 1 hour at RT. The blot was developed with ECL (Clarity Western ECL Substrate, BioRad, 170-5060) for 5 – 10 minutes. Exposure time – 0.4 second.

Courtesy of Msc. Iauhenia Isayenka, University of Sherbrooke, Canada