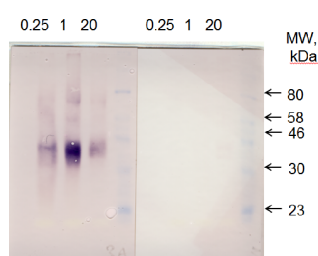


Product no **AS13 2668****Anti-Plastid acyl-ACP desaturase****Product information**

Immunogen	Putative mature form of <i>Chlamydomonas reinhardtii</i> plastid acyl-ACP desaturase expressed in <i>E.coli</i> , UniProt: A8IQB8
Host	Rabbit
Clonality	Polyclonal
Purity	Serum
Format	Lyophilized
Quantity	50 µl
Reconstitution	For reconstitution add 50 µl of sterile water
Storage	Store lyophilized/reconstituted at -20°C; once reconstituted make aliquots to avoid repeated freeze-thaw cycles. Please remember to spin the tubes briefly prior to opening them to avoid any losses that might occur from material adhering to the cap or sides of the tube.

Application information

Recommended dilution	1 : 1000-1 : 1500 (WB)
Expected apparent MW	40 35 kDa
Confirmed reactivity	<i>Chlamydomonas reinhardtii</i>
Predicted reactivity	<i>Volvox carteri</i>
	Species of your interest not listed? Contact us
Not reactive in	No confirmed exceptions from predicted reactivity are currently known
Additional information	Antibody dilution is going to be higher with ECL

Application example

20 µg of soluble protein from *Chlamydomonas reinhardtii*, were separated on **10% SDS-PAGE** and blotted for 1 h to **nitrocellulose**. Blots were blocked with 1% milk in PBS-T for 1 h at room temperature (RT) with agitation. Blot was incubated in the plastid acyl-ACP desaturase antibody in 1% milk in PBS-T at a dilution 1: 1500 for 2 h at RT with agitation (**left panel**) or pre-immune serum (**right panel**). The antibody solution was decanted and the blot was rinsed briefly twice, then washed once for 15 min and 3 times for 5 min in PBS-T at RT with agitation. Blot was incubated in secondary antibody (anti-rabbit IgG, ALP conjugated) diluted to 1:3 000 in for 1 h at RT with agitation. The blot was washed as above and reaction was visualized using BCIP/NBT.

Courtesy Dr. Dudley Page, UCLA, USA