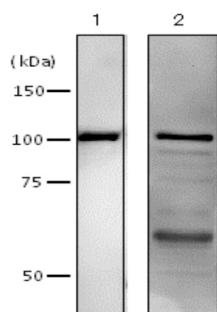
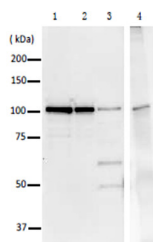


Product no **AS21 4547****Anti-POL I | DNA Polymerase 1****Product information**

<b>Immunogen</b>	Purified, full length, recombinant POL I protein from <i>E.coli</i> , UniProt: <a href="#">P00582</a>
<b>Host</b>	Rabbit
<b>Clonality</b>	Polyclonal
<b>Purity</b>	Serum. Contains 0.05 % sodium azide.
<b>Format</b>	Liquid
<b>Quantity</b>	100 µl
<b>Storage</b>	Store at -20 °C; make aliquots to avoid repeated freeze-thaw cycles. Please remember to spin the tubes briefly prior to opening them to avoid any losses that might occur from material adhering to the cap or sides of the tube.

**Application information****Recommended dilution** | assay dependent (IP), 1 : 1000 - 1 : 5000 (WB)**Expected | apparent MW** | 103 kDa**Confirmed reactivity** | *Escherichia coli***Predicted reactivity** | Species of your interest not listed? [Contact us](#)

Samples: 10 ng of purified DNA polymerase 1 from *E.coli* (**1**), *E. coli* strain AB1157 extract prepared by sonication (**2**) were separated on SDS-PAGE following a transfer to a membrane. Incubation with primary antibodies at 1 : 2000, followed by washes and incubation with HRP conjugated anti-rabbit IgG antibodies. Reaction was visualized by chemiluminescence according to manufacture's recommendations.



Samples: Purified DNA polymerase 1 ( 20 ng) (**1**) Purified DNA polymerase 1 (10 ng) (**2**) Crude lysate of *E. coli* strain AB1157 (10 µg) (**3**) The crude lysate of *E.coli* cells was reacted with anti-DNA polymerase 1 antibody and precipitated with protein G conjugated magnetic beads, and analyzed by Western blot by using anti-DNA polymerase 1 antibody. As the secondary antibody, anti-rabbit IgG antibody conjugated with HRP (suitable for detection of immunoprecipitation products) was used.