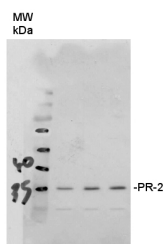


Product no **AS12 2366****Anti-PR-2 | Pathogenesis-related protein 2****Product information**

Immunogen	KLH-conjugated synthetic peptide derived from <i>Arabidopsis thaliana</i> PR-2 UniProt P33157 , TAIR AT3G57260
Host	Rabbit
Clonality	Polyclonal
Purity	Serum
Format	Lyophilized
Quantity	50 µl
Reconstitution	For reconstitution add 50 µl of sterile water
Storage	Store lyophilized/reconstituted at -20°C; once reconstituted make aliquots to avoid repeated freeze-thaw cycles. Please remember to spin the tubes briefly prior to opening them to avoid any losses that might occur from material adhering to the cap or sides of the tube.

Additional information | This product can be sold containing Proclin if requested**Application information**

Recommended dilution	1 : 1000 (WB)
Expected apparent MW	37.3 kDa (processing aa 1-30, mature peptide 34.1 kDa)
Confirmed reactivity	<i>Agostis stolonifera</i> cv. 'Penncross', <i>Arabidopsis thaliana</i> , <i>Glycine max</i> (roots)
Predicted reactivity	<i>Brassica juncea</i> , <i>Brassica oleracea</i> , <i>Citrus chinensis</i> , <i>Glycine max</i> , <i>Litchi chinensis</i> , <i>Manihot esculenta</i> , <i>Nicotiana tabacum</i>
	Species of your interest not listed? Contact us
Not reactive in	No confirmed exceptions from predicted reactivity are currently known
Additional information	Does not cross-react with other 1,3-beta glucosidases
Selected references	Bernacki et al. (2024) . METACASPASE8 (MC8) Is a Crucial Protein in the LSD1-Dependent Cell Death Pathway in Response to Ultraviolet Stress. <i>Int. J. Mol. Sci.</i> 2024, 25(6), 3195 Dong et al. (2020) . Overexpression of BrAFP1 gene from winter rapeseed (<i>Brassica rapa</i>) confers cold tolerance in <i>Arabidopsis</i> . <i>Plant Physiol Biochem.</i> 2020 Jul 25;155:338-345. doi: 10.1016/j.plaphy.2020.07.011. Ly et al. (2019) . Uncoupled Expression of Nuclear and Plastid Photosynthesis-Associated Genes Contributes to Cell Death in a Lesion Mimic Mutant. <i>Plant Cell.</i> 2019 Jan;31(1):210-230. doi: 10.1105/tpc.18.00813. Jespersen et al. (2017) . Metabolic Effects of Acibenzolar-S-Methyl for Improving Heat or Drought Stress in Creeping Bentgrass. <i>Front Plant Sci.</i> 2017 Jul 11;8:1224. doi: 10.3389/fpls.2017.01224. eCollection 2017. (western blot, <i>Agostis stolonifera</i> cv. ?Penncross?) Kim et al. (2014) . The <i>Arabidopsis</i> Immune Adaptor SRFR1 Interacts with TCP Transcription Factors that Redundantly Contribute to Effector-Triggered Immunity. <i>Plant J.</i> 2014 Apr 1. doi: 10.1111/tbj.12527.

Application example

10 µg of total protein from *Arabidopsis thaliana* mature leaves were extracted with 8M UREA and were separated on 12 % SDS-PAGE and blotted 1h to PVDF. Blots were blocked with 5% Milk in TBS-T 0,05% for 1h at room temperature (RT) with agitation. Blot was incubated in the primary antibody at a dilution of 1 : 1 000 for 1h at RT with agitation. The antibody solution was decanted and the blot was rinsed briefly twice, then washed once for 15 min and 3 times for 5 min in TBS-T at RT with agitation. Blot was incubated in secondary antibody (anti-rabbit IgG horse radish peroxidase conjugated, from Agrisera [AS09 602](#)) diluted to 1:10 000 in TBS-T/Milk 5% for 1h at RT with agitation. The blot was washed as above

This product is **for research use only** (not for diagnostic or therapeutic use)

contact: support@agrisera.com

Agrisera AB | Box 57 | SE-91121 Vännäs | Sweden | +46 (0)935 33 000 | www.agrisera.com

and developed for 5 min with ECL according to the manufacturers instructions. Exposure time was seconds 60 seconds.

Courtesy of Louis-Valentin Meteignier, PhD student, University of Sherbrooke, Canada