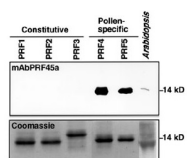


Product no **AS16 3143****Anti-PRO4,5 | Profilin-4,5 (clone mAbPRF45a (2-B8))****Product information****Immunogen** | Profilin 4 (PRF4) from *Arabidopsis thaliana*, UniProt: [Q38905](#), TAIR: [AT4G29340](#)**Host** | Mouse**Clonality** | Monoclonal**Subclass/isotype** | IgG1**Purity** | IgG1 immunoglobulin purified on Protein G in 0.1M Sodium Phosphate, pH 7.4, 0.15M NaCl, 0.05% (w/v) sodium azide.**Format** | Liquid**Quantity** | 100 µg**Storage** | Store at -20°C. Make aliquots to avoid repeated freeze-thaw cycles. Please remember to spin the tubes briefly prior to opening them to avoid any losses that might occur from material adhering to the cap or sides of the tube.**Additional information** | Exact working dilution needs to be determined by end user**Application information****Expected | apparent MW** | 14 kDa**Confirmed reactivity** | *Arabidopsis thaliana***Not reactive in** | No confirmed exceptions from predicted reactivity are currently known**Additional information** | This antibody reacts with both, PRF4 (profilin 4) and PRF5 (profilin 5)**Selected references** | [Kandasamy, M.K., et al. \(2002\). Plant profilin isovariants are distinctly regulated in vegetative and reproductive tissues. Cell Motil Cytoskeleton 52\(1\):22-32.](#)
[McKinney, E.C., et al. \(2001\) Small changes in the regulation of one Arabidopsis profilin isovariant, PRF1, alter seedling development. Plant Cell 13\(5\): 1179-91.](#)**Application example**

5 µg of recombinant profilins from *Arabidopsis thaliana* and 20 µg of total protein from whole plant extract. Coomassie blue stained gel (bottom) shows equal loading of recombinant profilins.