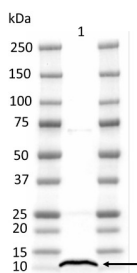


Product no **AS20 4368****Anti-PsaG | PSI-G subunit of photosystem I****Product information**

Immunogen	KLH-conjugated peptide derived from <i>Arabidopsis thaliana</i> PsaG, UniProt: Q9S7NZ , TAIR: AT1G55670
Host	Chicken
Clonality	Polyclonal
Purity	Immunogen affinity purified serum in PBS pH 7.4.
Format	Lyophilized
Quantity	50 µg
Reconstitution	For reconstitution add 50 µl, of sterile water
Storage	Store lyophilized/reconstituted at -20°C; once reconstituted make aliquots to avoid repeated freeze-thaw cycles. Please remember to spin the tubes briefly prior to opening them to avoid any losses that might occur from material adhering to the cap or sides of the tube.

Application information

Recommended dilution	1 : 1000 (WB)
Expected apparent MW	17 11 kDa (after transit peptide is removed)
Confirmed reactivity	<i>Arabidopsis thaliana</i>
Predicted reactivity	<i>Medicago truncatula</i> , <i>Spinacia oleracea</i> , <i>Vitis vinifera</i> Species of your interest not listed? Contact us
Not reactive in	<i>Chlamydomonas reinhardtii</i>
Selected references	To be added when available, antibody released in November 2020.



4 µg/well of total chlorophyll from frozen thylakoids extracted freshly from *Arabidopsis thaliana* as described in [Bassi et al., 1985](#) were separated on 4-15% SDS-PAGE and blotted 1 h to PVDF semi-dry. Blot was blocked with 5% milk for 1 h/RT with agitation. Blot was incubated in the primary antibody at a dilution of 1: 1 000 in TBS-T ON/4°C with agitation. The antibody solution was decanted and the blot was rinsed briefly twice, then washed once for 15 min and 3 times for 5 min in TBS-T at RT with agitation. Blot was incubated in Agrisera matching secondary antibody (anti-chicken IgG horse radish peroxidase conjugated [AS10 1489](#)) diluted to 1:5 000 in for 1 h/RT with agitation. The blot was washed as above and developed for 1 min with Agrisera ECLBright. Exposure time was 2 seconds.

Courtesy of Dr. Guillem Borràs I Gas, University of Copenhagen, Danmark