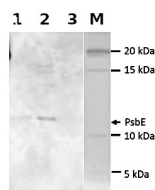


Product no **AS19 4330****Anti-PsbE | Cytochrome b559 subunit alpha (Algal)****Product information**

Immunogen	KLH-conjugated peptide derived from algal PsbE sequences, including <i>Chlamydomonas reinhardtii</i> PsbE UniProt: P48268
Host	Rabbit
Clonality	Polyclonal
Purity	Immunogen affinity purified serum in PBS pH 7.4.
Format	Lyophilized
Quantity	50 µg
Reconstitution	For reconstitution add 50 µl of sterile water
Storage	Store lyophilized/reconstituted at -20°C; once reconstituted make aliquots to avoid repeated freeze-thaw cycles. Please remember to spin the tubes briefly prior to opening them to avoid any losses that might occur from material adhering to the cap or sides of the tube.

Application information

Recommended dilution	1 : 1000 (WB)
Expected apparent MW	9 kDa
Confirmed reactivity	<i>Synechocystis</i> PCC 6803
Predicted reactivity	<i>Bathycoccus prasinos</i> , <i>Capsosiphon fulvescens</i> , <i>Chlamydomonas</i> sp., <i>Gonium pectorale</i> , <i>Mesostigma viride</i> , <i>Microglens monadina</i> , <i>Nannochloropsis granulata</i> , <i>Neglectella solitaria</i> , <i>Ostreococcus tauri</i> , <i>Pandorina morum</i> , <i>Planctonema lauterbornii</i> , <i>Thermosynechococcus vulcanus</i> , <i>Tupiella akineta</i> , <i>Ulva lactuca</i> , <i>Volvox compacta</i> , <i>Volvox africanus</i> , <i>Yamagishiella unicocca</i>
	Species of your interest not listed? Contact us
Not reactive in	higher plants
Selected references	To be added when available. Antibody released in March 2021.

**Samples:**

- 1 - 10 µg of *Synechocystis* PCC 6803 isolated thylakoid membranes
- 2 - 20 µg of *Synechocystis* PCC 6803 isolated thylakoid membranes
- 3 - 10 µg of PsbE deletion mutant *Synechocystis* PCC 6803 isolated thylakoid membranes

10 or 20 µg/well of total protein from isolated thylakoid membranes with MES buffer (25mM MES/NaOH, pH 6.5, 10 mM MgCl₂, 10 mM CaCl₂, and 25% glycerol) and denatured with SDS-solubilizing buffer stock (5 % SDS in 25 mM Tris-HCl, pH 7, 1M sucrose) with working concentrations 1% SDS and 2% DTT at 23°C for 1 hour were separated on 16 - 20 % AA, 7 M urea SDS-PAGE and blotted 1h to PVDF (pore size of 40 µm), using wet transfer. Blot was blocked with 0.2 % Tween in TBS for 30 min/RT with agitation. Blot was incubated in the PsbE primary antibody at a dilution of 1: 1 000 overnight at 4°C with agitation in TBS-T. The antibody solution was decanted and the blot was rinsed briefly twice, then washed once for 5 min in TBS-T at RT with agitation. The antibody solution was decanted and the blot was rinsed briefly twice, then washed once for 5 min in TBS-T at RT with agitation. Blot was incubated in Agrisera secondary antibody ([AS09 602](#)) diluted to 1:25 000 in TBS-T for 1h/RT with agitation. The blot was washed as above, incubated for 5 min in AgriseraECL Bright (AS16 ECL-N) and developed in LAS-4000 camera (Fujifim, Japan). Exposure time was 1 minutes.

Courtesy Dr. Josef Komenda, ALGATECH, Czech Republic