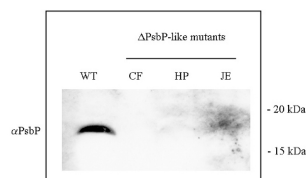


Product no **AS10 682****Anti-PsbP-like protein (sl11418) | cyanobacterial****Product information**

<b>Immunogen</b>	KLH-conjugated synthetic peptide derived from PsbP-like protein of <i>Synechocystis</i> sp. PCC 6803, UniProt: <a href="#">P73952</a>
<b>Host</b>	Rabbit
<b>Clonality</b>	Polyclonal
<b>Purity</b>	Serum
<b>Format</b>	Lyophilized
<b>Quantity</b>	200 µl
<b>Reconstitution</b>	For reconstitution add 200 µl of sterile water
<b>Storage</b>	Store lyophilized/reconstituted at -20°C; once reconstituted make aliquots to avoid repeated freeze-thaw cycles. Please remember to spin the tubes briefly prior to opening them to avoid any losses that might occur from material adhering to the cap or sides of the tube.

**Application information**

<b>Recommended dilution</b>	1 : 2000 (WB)
<b>Expected   apparent MW</b>	20.7   17 kDa
<b>Confirmed reactivity</b>	<i>Synechocystis</i> sp. PCC 6803
<b>Predicted reactivity</b>	<i>Anabaena variabilis</i> , <i>Arthrospira maxima</i> , <i>Lyngbya</i> sp. PCC 8106, <i>Microcoleus chthonoplastes</i> , <i>Ostreococcus lucimarinus</i> , <i>Trichodesmium erythraeum</i>
	Species of your interest not listed? <a href="#">Contact us</a>
<b>Not reactive in</b>	No confirmed exceptions from predicted reactivity are currently known
<b>Selected references</b>	<a href="#">Gandini</a> et al. (2017). The transporter SynPAM71 is located in the plasma membrane and thylakoids, and mediates manganese tolerance in <i>Synechocystis</i> PCC6803. <i>New Phytol.</i> 2017 Mar 20. doi: 10.1111/nph.14526. <a href="#">Sveshnikov</a> et al. (2007) The PsbP-like protein (sl11418) of <i>Synechocystis</i> sp. PCC 6803 stabilises the donor side of Photosystem II, <i>Photosynth. Res.</i> 93, 101-109. <a href="#">Ishikawa</a> et al. . (2005) Functional analysis of the PsbP-like protein (sl11418) in <i>Synechocystis</i> sp. PCC 6803, <i>Photosynth. Res.</i> 84, 257-262.

**Application example**

0.25 µg of chlorophyll *a*/lane from *Synechocystis* sp. PCC 6802 wild type and PsbP-like deletion mutants were separated on 12.5 % SDS-PAGE and blotted 1 h to nitrocellulose. Filters were blocked 1 h with 2% low-fat milk powder in TBS-T (0.1% TWEEN 20) and probed with anti-PsbP-like antibody (AS10 682, 1:2 000, 1 h) and secondary anti-rabbit (1:20000, 1 h) antibody (HRP conjugated) in TBS-T containing 2% low fat milk powder. Antibody incubations were followed by washings in TBS-T. All steps were performed at RT with agitation. Blots were developed for 5 min with ECL detection reagent according to the manufacturers instructions. Exposure time was 15 seconds.

Courtesy Dr. Sveshnikov