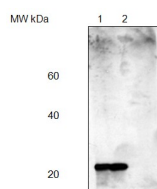


Product no **AS08 305****Anti-PsbP | 23 kDa protein of the oxygen evolving complex (OEC) of PSII (anti-monocot protein)****Product information**

Immunogen	Recombinant sorghum OE23 protein
Host	Rabbit
Clonality	Polyclonal
Purity	Serum
Format	Lyophilized
Quantity	100 µl
Reconstitution	For reconstitution add 100 µl of sterile water
Storage	Store lyophilized/reconstituted at -20°C; once reconstituted make aliquots to avoid repeated freeze-thaw cycles. Please remember to spin the tubes briefly prior to opening them to avoid any losses that might occur from material adhering to the cap or sides of the tube.

Application information

Recommended dilution	1 : 5 000 (WB)
Expected apparent MW	23 kDa
Confirmed reactivity	<i>Arabidopsis thaliana</i> , <i>Sorghum bicolor</i> , <i>Zea mays</i>
Predicted reactivity	<i>Hordeum vulgare</i> , <i>Oryza sativa</i> Species of your interest not listed? Contact us
Not reactive in	No confirmed exceptions from predicted reactivity are currently known

Application example

5 µg of total protein from (1) *Arabidopsis thaliana* total leaf extract; (2) *Zea mays* total leaf extract were separated in a **12% or 5-15%** gradient gel following by transfer to **nitrocellulose membrane**. Membrane was blocked with **TBST + 4% non-fat dried milk, 20 min** following by three washes in TBST. Incubation time with primary and secondary antibodies was 1 hr primary, 30 min for secondary antibodies. Detection was performed using chemiluminescence.