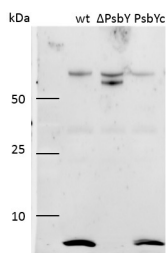


Product no **AS06 114****Anti-PsbY | Small subunit Y of PSII****Product information**

<b>Immunogen</b>	KLH-conjugated peptide derived from <i>Arabidopsis thaliana</i> PsbY sequence, UniProt: <a href="#">Q49347</a> , TAIR: <a href="#">At1g67740</a>
<b>Host</b>	Rabbit
<b>Clonality</b>	Polyclonal
<b>Purity</b>	Serum
<b>Format</b>	Lyophilized
<b>Quantity</b>	200 µl
<b>Reconstitution</b>	For reconstitution add 200 µl of sterile water
<b>Storage</b>	Store lyophilized/reconstituted at -20°C; once reconstituted make aliquots to avoid repeated freeze-thaw cycles. Please remember to spin the tubes briefly prior to opening them to avoid any losses that might occur from material adhering to the cap or sides of the tube.

**Application information**

<b>Recommended dilution</b>	1 : 1000 (WB)
<b>Expected   apparent MW</b>	4.7 and 4.9 kDa
<b>Confirmed reactivity</b>	<i>Arabidopsis thaliana</i>
<b>Predicted reactivity</b>	<i>Glycine soja</i> , <i>Medicago truncatula</i> , <i>Morus notabilis</i> , <i>Oryza sativa</i> , <i>Populus trichocarpa</i> , <i>Ricinus communis</i> , <i>Solanum chacoense</i> , <i>Spinacia oleracea</i> , <i>Theobroma cacao</i> , <i>Zea mays</i> , <i>Zostera marina</i>
	Species of your interest not listed? <a href="#">Contact us</a>
<b>Not reactive in</b>	Cyanobacteria
<b>Selected references</b>	<a href="#">Shan et al. (2024)</a> . Architecture and functional regulation of a plant PSII-LHCII megacomplex. <i>Sci Adv.</i> 2024 Dec 13;10(50):eadq9967. doi: 10.1126/sciadv.adq9967. <a href="#">Von Sydow et al. (2016)</a> . The PsbY protein of Arabidopsis Photosystem II is important for the redox control of cytochrome b559. <i>Biochim Biophys Acta.</i> 2016 May 21. pii: S0005-2728(16)30536-9. doi: 10.1016/j.bbabi.2016.05.004.

**Application example**

1 µg of total protein from *Arabidopsis thaliana* PSII enriched membranes in BBY storage buffer (20 mM MES-NaOH pH 6.3, 400 mM sorbitol, 5 mM MgCl<sub>2</sub>, 10 mM CaCl<sub>2</sub>, and 15 mM NaCl) denatured with Laemmli sample buffer at 70°C for 5 min were separated on 16.5 % Tris-Tricine, 6 M Urea SDS-PAGE with a 10 % spacer gel, and blotted 1h to PVDF using semi-dry transfer. Blots were blocked with 2 % low fat milk for 1h at room temperature (RT) with agitation. Blot was incubated in the primary antibody at a dilution of 1: 1 000 for 1h at RT with agitation in TBS-T. The antibody solution was decanted and the blot was rinsed briefly twice, then washed once for 15 min and 3 times for 5 min in TBS-T at RT with agitation. Blot was incubated in secondary antibody (anti-rabbit IgG horse radish peroxidase conjugated, from ) diluted to 1:10 000 in TBS-T for 1h at RT with agitation. The blot was washed as above, the last wash in distilled water, and developed for 2 min with chemiluminescent detection reagent. Exposure time was 60 seconds.

Courtesy of Lotta von Sydow, KBC, Umeå, Sweden