

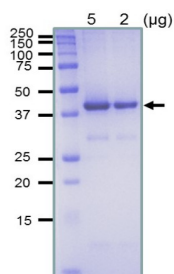
Product no **AS21 4542P****RecA (protein, positive control)****Product information**

Purity	Contains 50% glycerol, 20 mM Tris-HCl (pH 8), 1 mM EDTA, 150 mM KCl, 1 mM DTT. Over 90 % pure, by SDS-PAGE
Format	Liquid
Quantity	100 µg
Storage	Store at -20 °C or -80 °C for a longer period of time; once make aliquots to avoid repeated freeze-thaw cycles. Please remember to spin the tubes briefly prior to opening them to avoid any losses that might occur from material adhering to the cap or sides of the tube.

Additional information RecA (protein, positive control)**Application information****Expected | apparent MW** 38 kDa**Additional information** RecA protein is full length, highly purified (over 90 %, SDS-PAGE) by several steps of chromatography. Provided at a concentration of 1 mg/ml estimated by BCA method. UniProt: [P0A7G6](#)

Selected references [Ishibashi](#), Oura S & Umemura (2017) Adsorption of DNA binding proteins to functionalized carbon nanotube surfaces with and without DNA wrapping. Eur Biophys J. 2017 Sep;46(6):541-547. doi: 10.1007/s00249-017-1200-3. Epub 2017 Feb 15. PMID: 28204854.

[Oura](#) et al. (2015) Biomolecular recognition ability of RecA proteins for DNA on single-walled carbon nanotubes. Colloids Surf B Biointerfaces. 2015 Feb 1;126:496-501. doi: 10.1016/j.colsurfb.2015.01.002. Epub 2015 Jan 10. PMID: 25612818.

5 and 2 µg of highly purified RecA protein from *Escherichia coli* was separated on SDS-PAGE and stained by Coomassie.