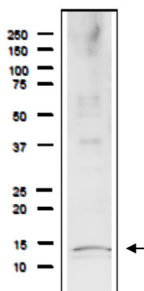


Product no **AS21 4551****Anti-Rfa3/Rpa3 | Replication factor A protein 3 (*Saccharomyces cerevisiae*)****Product information**

<b>Immunogen</b>	Recombinant Rfa3 protein from <i>Saccharomyces cerevisiae</i> , UniProt: <a href="#">P26755</a>
<b>Host</b>	Rabbit
<b>Clonality</b>	Polyclonal
<b>Purity</b>	Serum. Contains 0.05% sodium azide.
<b>Format</b>	Liquid
<b>Quantity</b>	50 µl
<b>Storage</b>	Store at -20 °C; make aliquots to avoid repeated freeze-thaw cycles. Please remember to spin the tubes briefly prior to opening them to avoid any losses that might occur from material adhering to the cap or sides of the tube.

**Application information**

<b>Recommended dilution</b>	1 : 2000 (WB)
<b>Expected   apparent MW</b>	13.8   15 kDa
<b>Confirmed reactivity</b>	<i>Saccharomyces cerevisiae</i>
<b>Predicted reactivity</b>	Species of your interest not listed? <a href="#">Contact us</a>



Crude extract of *Saccharomyces cerevisiae* strain BY4741 was separated on a 12.5 % SDS-PAGE and blotted to a PVDF membrane using wet transfer. Blocking was done with a 5 % non-fat milk for 1 h. Primary antibody was incubated at 2: 1000, 1h/RT, followed by washes and incubation with a secondary goat anti-rabbit IgG HRP conjugated antibodies, used at 1: 10 000 1h/RT. Reaction was developed using chemiluminescence following manufacture's recommendations.