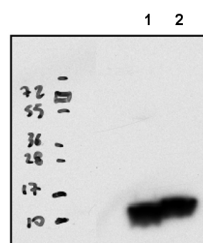


Product no **AS16 4082****Anti-RPL33 | 50S ribosomal protein L33 (chloroplastic)****Product information**

<b>Immunogen</b>	KLH-conjugated peptide, derived from <i>Arabidopsis thaliana</i> RPL33 UniProt: <a href="#">P56796</a> , TAIR: <a href="#">AtCg00640</a>
<b>Host</b>	Rabbit
<b>Clonality</b>	Polyclonal
<b>Purity</b>	Immunogen affinity purified serum in PBS pH 7.4.
<b>Format</b>	Lyophilized
<b>Quantity</b>	50 µg
<b>Reconstitution</b>	for reconstitution add 50 µl of sterile water
<b>Storage</b>	Store lyophilized/reconstituted at -20°C; once reconstituted make aliquots to avoid repeated freeze-thaw cycles. Please remember to spin the tubes briefly prior to opening them to avoid any losses that might occur from material adhering to the cap or sides of the tube.

**Application information**

<b>Recommended dilution</b>	1: 2000 - 1: 5000 (WB)
<b>Expected   apparent MW</b>	7.6   10 kDa
<b>Confirmed reactivity</b>	<i>Arabidopsis thaliana</i> , <i>Hordeum vulgare</i> , <i>Zea mays</i>
<b>Predicted reactivity</b>	<i>Acacia restiacea</i> , <i>Berberis bealei</i> , <i>Blossfeldia liliputana</i> , <i>Boehmeria spicata</i> , <i>Braya humilis</i> , <i>Calochortus albus</i> , <i>Citrullus colocynthis</i> , <i>Corymbia gummifera</i> , <i>Croomia heterosepala</i> , <i>Croton texensis</i> , <i>Cucurbita pepo</i> , <i>Dodonaea viscosa</i> , <i>Eucalyptus salmonophloia</i> , <i>Fragaria ananassa</i> , <i>Gossypium populifolium</i> , <i>Hippophae rhamnoides</i> , <i>Holodiscus discolor</i> , <i>Khaya senegalensis</i> , <i>Lessertia frutescens</i> , <i>Morus alba</i> var. <i>atropurpurea</i> , <i>Natsiatum herpeticum</i> , <i>Oryza sativa</i> , <i>Pachycladon cheesemanii</i> , <i>Pereskia sacharosa</i> , <i>Polylepis</i> sp., <i>Potentilla lancinata</i> , <i>Ranzania japonica</i> , <i>Ribes fasciculatum</i> var. <i>chinense</i> , <i>Rubus niveus</i> , <i>Solanum lycopersicum</i> , <i>Solanum tuberosum</i> , <i>Sonneratia alba</i> , <i>Trifolium semipilosum</i> , <i>Typha domingensis</i> , <i>Urophysa rockii</i> , <i>Vicia faba</i> , <i>Vicia sepium</i> , <i>Ximenia americana</i>
	Species of your interest not listed? <a href="#">Contact us</a>
<b>Not reactive in</b>	Cyanobacteria
<b>Additional information</b>	Cross-reacting bands may appear when total cell extract is analysed.

**Application example**

10 µg of stromal protein from *Arabidopsis thaliana* (1) and *Zea mays* (2) denatured at 95°C 10 minutes were separated on 4-20% SDS-PAGE gradient gel and blotted 1h to PVDF using wet transfer (80V 1 h 30 minutes). Blot was blocked with 5 % milk in TBS-T 1h/RT. Blot was incubated in the primary antibody at a dilution of 1: 2 000 in TBS-T or ON/4°C with agitation. The antibody solution was decanted and the blot was rinsed briefly twice, then washed once for 15 min and 3 times for 5 min in TBS-T at RT with agitation. Blot was incubated in Agrisera matching secondary antibody (anti-rabbit IgG horse radish peroxidase conjugated [AS09 602](#)) diluted to 1:20 000 in for 1h/RT with agitation. The blot was washed as above and developed with chemiluminescent detection reagent and touch exposure was applied.

Courtesy of Dr. Louis-Valentin Mereignier, CNRS, France