

Product no **AS16 4094****Anti-RPS14 | Ribosomal protein S14 (mitochondrial)****Product information**

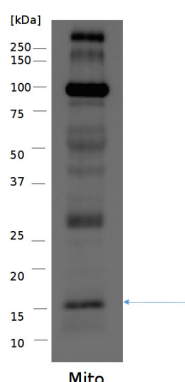
Immunogen	KLH-conjugated synthetic peptide chosen from <i>Arabidopsis thaliana</i> RPS14 protein sequence. UniProt: Q64695 TAIR:
Host	Rabbit
Clonality	Polyclonal
Purity	Immunogen affinity purified serum in PBS pH 7.4.
Format	Lyophilized
Quantity	50 µg
Reconstitution	For reconstitution add 50 µl of sterile water
Storage	Store lyophilized/reconstituted at -20°C; make aliquots to avoid repeated freeze-thaw cycles.

Application information**Recommended dilution** 1 : 1000 (WB)**Expected | apparent MW** 15.6 | 16 kDa**Confirmed reactivity** *Arabidopsis thaliana*

Predicted reactivity *Amborella trichopoda*, *Anthurium amnicola*, *Brassica juncea*, *Brassica oleracea* var. *botrytis*, *Capsella rubella*, *Carica papaya*, *Castilleja paramensis*, *Cycas taitungensis*, *Eruca sativa*, *Erythranthe guttata*, *Eschscholzia californica*, *Flagellaria indica*, *Glycine max*, *Gossypium raimondii*, *Guzmania lingulata*, *Heuchera parviflora* var. *saurensis*, *Hesperelaea palmeri*, *Liriodendron tulipifera*, *Luzula sylvatica*, *Medicago truncatula*, *Nelumbo nucifera*, *Nicotiana tabacum*, *Nymphaea tetragona*, *Oenothera berteriana*, *Pisum sativum*, *Phaseolus angularis*, *Phoenix dactylifera*, *Poa saltuensis* subsp. *languida*, *Populus canescens*, *Raphanus sativus*, *Silene latifolia*, *Sinapis arvensis*, *Typha latifolia*, *Vicia faba*, *Vigna radiata*, *Vitis vinifera*

Species of your interest not listed? [Contact us](#)

Selected references [Wang](#) et al. (2020) Rerouting of ribosomal proteins into splicing in plant organelles. BioRxiv, DOI: 10.1101/2020.03.03.974766 .

Application example

30 µg of mitochondrial fraction from *Arabidopsis thaliana* extracted with buffer (sucrose, tetrasodiumpyrophosphate, EDTA, KH₂O₄, PVP-40, BSA, pH 7.5) and denatured with 56°C for 15 min at 650 rpm were separated on 12 % SDS-PAGE and blotted overnight (12V) to PVDF using wet transfer. Blots were blocked with 5% skimmed powder milk in TBS-T for 1h at room temperature (RT) with agitation. Blot was incubated in the purified anti S14 serum at a dilution of 1: 1 000 for 1,5h at RT with agitation. The antibody solution was decanted and the blot was rinsed briefly twice, then washed once for 15 min and 3 times for 5 min in TBS-T at RT with agitation. Blot was incubated in secondary antibody (anti-rabbit IgG horse radish peroxidase conjugated, from Agrisera, [AS09 602](#)) diluted to 1:25 000 in for 1h at RT with agitation. The blot was washed as above and developed for 2 min with chemiluminescent detection reagent. Exposure time was ~ 60 seconds.

Courtesy of Dr. Małgorzata Kwaśniak-Owczarek, University of Wrocław, Poland