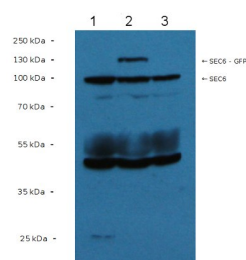


Product no **AS13 2686****Sec6 | Exocyst complex subunit****Product information**

|                       |   |
|-----------------------|---|
| <b>Immunogen</b>      | KLH-conjugated synthetic peptide derived from <i>Arabidopsis thaliana</i> Sec6, UniProt <a href="#">F4IA34</a> , TAIR <a href="#">AT1G71820</a>   |
| <b>Host</b>           | Rabbit  |
| <b>Clonality</b>      | Polyclonal  |
| <b>Purity</b>         | Serum   |
| <b>Format</b>         | Lyophilized   |
| <b>Quantity</b>       | 50 µl   |
| <b>Reconstitution</b> | For reconstitution add 50 µl of sterile water   |
| <b>Storage</b>        | Store lyophilized/reconstituted at -20°C; once reconstituted make aliquots to avoid repeated freeze-thaw cycles. Please remember to spin the tubes briefly prior to opening them to avoid any losses that might occur from material adhering to the cap or sides of the tube. |

**Application information**

|                               |  |
|-------------------------------|--|
| <b>Recommended dilution</b>   | 1 : 1000 (WB)  |
| <b>Expected   apparent MW</b> | 88,4 kDa   |
| <b>Confirmed reactivity</b>   | <i>Arabidopsis thaliana</i>  |
| <b>Predicted reactivity</b>   | <i>Carica papaya</i> , <i>Medicago truncatula</i> , <i>Ricinus communis</i><br>Species of your interest not listed? <a href="#">Contact us</a>   |
| <b>Not reactive in</b>        | No confirmed exceptions from predicted reactivity are currently known  |
| <b>Additional information</b> | Antibody is also recognizing recombinant Sec6  |
| <b>Selected references</b>    | <a href="#">Kulich et al. (2018)</a> . Deubiquitinase OTU5 affects Root Responses to Phosphate Starvation. <i>Plant Physiol.</i> 2018 Jan 4. pii: pp.01693.2017. doi: 10.1104/pp.17.01693. |

**application example**

50 µg of total protein from *Arabidopsis thaliana*, wt whole plant extract of one week old seedlings (1), whole plant extract of one week old seedlings of *Arabidopsis thaliana* Col-0 expressing SEC6-GFP (2), whole plant extract of one week old seedlings of *Arabidopsis thaliana* sec8 k.o. mutant complemented by SEC8-GFP (3), extracted with SEC6/8 buffer (20mM HEPES, pH 6.8; 150mM NaCl; 1mM EDTA; 1mM DTT; 0.5% Tween 20) were separated on 10 % SDS-PAGE then using semi-dry transfer blotted 1h to the nitrocellulose membrane (1.5 mA/cm<sup>2</sup>). Blots were blocked with 5 % non fat milk in PBS overnight at 4°C with agitation. Blot was incubated in the primary antibody in 5 % milk in PBS at a dilution of 1: 7500 for 1h at RT with agitation. The antibody solution was decanted and the blot was rinsed five times 5 min with PBST (PBS + 0.5% Tween 20) at RT with agitation. Blot was incubated in secondary antibody (anti-rabbit IgG horse radish peroxidase conjugated) diluted to 1:15 000 in 5 % milk in PBS for 1h at RT with agitation. The blot was washed as above and developed for 5 min with chemiluminescent detection reagent according to the manufacturer's instructions. Exposure time was 10 seconds.

Courtesy of Dr. Michal Hála, UEB, Czech Republic