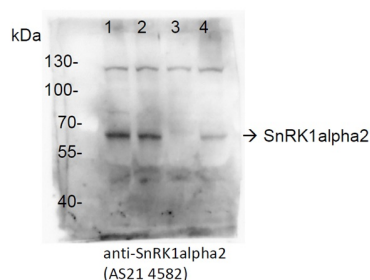


Product no **AS21 4582****Anti-SnRK1alpha2 | SNF1-related protein kinase catalytic subunit alpha KIN11****Product information**

<b>Immunogen</b>	KLH-conjugated peptide derived from KIN11 of <i>Arabidopsis thaliana</i> , UniProt: <a href="#">P92958</a> , TAIR: <a href="#">AT3G29160</a>
<b>Host</b>	Rabbit
<b>Clonality</b>	Polyclonal
<b>Purity</b>	Antigen affinity purified serum, in PBS pH 7.4
<b>Format</b>	Lyophilized
<b>Quantity</b>	50 µg
<b>Reconstitution</b>	For reconstitution add 50 µl, of deionized or sterile water.
<b>Storage</b>	Store lyophilized/reconstituted at -20°C; once reconstituted make aliquots to avoid repeated freeze-thaw cycles. Please, remember to spin tubes briefly prior to opening them to avoid any losses that might occur from lyophilized material adhering to the cap or sides of the tubes.

**Application information**

<b>Recommended dilution</b>	1 : 1000 (WB)
<b>Expected   apparent MW</b>	58.7 kDa
<b>Confirmed reactivity</b>	<i>Arabidopsis thaliana</i>
<b>Predicted reactivity</b>	Species of your interest not listed? <a href="#">Contact us</a>
<b>Not reactive in</b>	<i>Setaria viridis</i>
<b>Selected references</b>	To be added when available, antibody available in August 2025.

**Samples:**

- 1 – *Arabidopsis thaliana* Col-0
- 2 – *Arabidopsis thaliana* snrk1 1-3(GABI\_579\_E09)
- 3 – *Arabidopsis thaliana* snrk1 2-2 (WiscDsLox384F5)
- 4 – *Arabidopsis thaliana* snrk1 1-3 (-/-), 2-1 (+/-)(GABI\_579\_E09/WiscDsLox320B03)

*A.thaliana* seedlings were grown in solid half MS for 2 weeks. Whole seedling protein extracts were prepared. Samples were collected, ground in liquid nitrogen and immediately placed in two volumes of extraction buffer (50 mM Tris-HCl pH 8.0, 150 mM NaCl, 1 %TritonX-100, 3mM DTT and protease inhibitor cocktail) on ice during 30 minutes for protein extraction. Homogenates were cleared by centrifugation at 12 000g, 4°C for 15 min. 50 µg of each protein extract was loaded in to a 8 % SDS-PAGE. Gel was run for 2h at 100-120 V followed by a protein transfer and membrane was subsequently analyzed with primary antibodies anti-SnRK1alpha2(AS214582; at 1:500) followed by incubation with a secondary antibody, goat anti-rabbit HRP conjugated.

Courtesy of Dr. Borja Belda Palazón, Instituto de Biología Molecular y Celular de Plantas, CSIC/Universidad Politécnica de Valencia, Spain