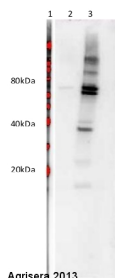


Product no **AS09 569****Anti-Soy protein****Product information**

Anti-Soy protein

Immunogen | *Glycine max* flour protein extract**Host** | Chicken**Clonality** | Polyclonal**Purity** | Immunogen affinity purified IgY in PBS pH 7.2. Contains 0.075 % sodium azide.**Format** | Liquid**Quantity** | 100 µg**Storage** | Store at -20 °C; make aliquots to avoid working with a stock. Please remember to spin the tubes briefly prior to opening them to avoid any losses that might occur from material adhering to the cap or sides of the tube.**Additional information** | Antibodies were purified on immobilized soybean proteins**Application information****Recommended dilution** | 2- 5 µl/ml (capture ELISA), 0,1-1 µl/ml (WB)**Confirmed reactivity** | *Glycine max* proteins**Predicted reactivity** | Soybean proteins

Total soy protein 1 µg (lane 2) and 5 µg (lane 3) were loaded on NuPage gel (Invitrogen) and transferred to the PVDF membrane. **Filters** were blocked 1h with 2% low-fat milk powder in TBS-T (0.1% TWEEN 20) and probed with anti-soy protein antibody (AS09 569, 1:10 000, 0.5 µl/5ml, 1h) and secondary anti-chicken (1:25 000, 1 h) antibody (HRP conjugated, secondary antibody [AS09 602](#)) in TBS-T containing 2% low fat milk powder. Antibody incubations were followed by washings in TBS-T (15, +5, +5, +5 min). All steps were performed at RT with agitation. Signal was detected with chemiluminescent detection reagent using a Fuji LAS-3000 CCD (300s, standard sensitivity). Exposure time was 2 min.

Reactivity of this antibody to egg or milk proteins was not analysed.