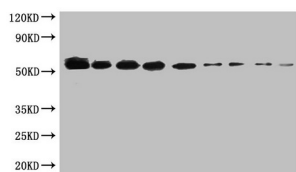


Product no **AS25 5109****Anti-Sumo Tag Monoclonal Antibody****Product information**

Immunogen	Sumo tag protein sequence
Host	Mouse
Clonality	Monoclonal
Subclass/isotype	IgG1
Purity	>95%, Protein G purified
Format	Liquid
Quantity	50 µg
Storage	Upon receipt, store at -20°C or -80°C. Avoid repeated freeze.
Please remember to spin the tubes briefly prior to opening them to avoid any losses that might occur from material adhering to the cap or sides of the tube.	

Application information**Recommended dilution** 1:500-1:5000 (WB)**Expected | apparent MW** Depends upon MW of fusion partner**Additional information** Antibody is present in 0.01M PBS, pH 7.4, containing 0.03% Proclin 300 as preservative and 50% Glycerol.Cusabio

SUMO tagged fusion protein (20 ng/ml) was subjected to SDS-PAGE followed by Western Blot with anti-SUMO tag antibody at a dilution of:

Lane 1:1000

Lane 2:2000

Lane 3:4000

Lane 4:8000

Lane 5:16 000

Lane 6:32 000

Lane 7:64 000

Lane 8:12 8000

Lane 9:25 6000

SUMO tagged fusion protein was separated on Tris-Glycine 12 % SDS-PAGE in reduced conditions at 40 mA followed by a semi-dry transfer at 60 mA for 80 minutes (0.45mm PVDF membrane purchased from Millipore). Blocking was done with 5% skim milk in PBS at RT/1h. Primary antibody was diluted in 0.05% PBST + 2.5% skim milk powder and incubated ON/4°C in a dilution of 1: 5000. Washing was done with 0.1% PBST (4 times, 10 minutes each) followed by a secondary antibody was diluted to 1:50 000 (0.05% with PBST + 2.5% skim milk powder) and incubated at RT/2h followed by four time washes with 0.1% PBST for 10 minutes each and chemiluminescent reaction development and recording of a signal.

Calculated and apparent MW is 55 kDa.