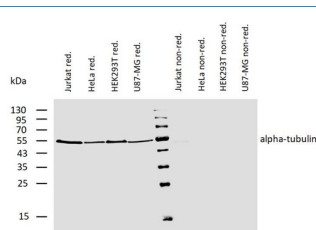


Product no AS21 4624**Anti-Tubulin alpha chain, Biotin conjugated (clone TU-01)****Product information**

Immunogen	Fraction of tubulin purified from porcine brain by two cycles of polymerization - depolymerization. UniProt: Q71U36
Host	Mouse
Clonality	Monoclonal
Subclass/isotype	IgG1
Purity	Conjugated with biotin-LC-NHS under optimum conditions and free of unconjugated biotin
Format	Liquid at 1 mg/ml.
Quantity	0.1 mg
Storage	Store at 2-8 °C. Do not freeze. Do not use after expiration date stamped on the label. Please remember to spin the tubes briefly prior to opening them to avoid any losses that might occur from material adhering to the cap or sides of the tube.
Additional information	This antibody is recognizing a defined epitope (aa 65-97) on N-terminal structural domain of alpha-tubulin 1, UniProt: Q71U36

Application information

Recommended dilution	1-2 µg/ml (WB)
Expected apparent MW	50 54 kDa
Confirmed reactivity	<i>Arabidopsis thaliana</i> , <i>Eisenia</i> , <i>Nicotiana tabacum</i> , <i>Paramecium</i> , <i>Saccharomyces cerevisiae</i> , human, mouse, pig, turkey
Predicted reactivity	Species of your interest not listed? Contact us
Selected references	To be added when available, antibody released in October 2021.



Samples: lysates of various cell lines under reducing (left to MW markers) and non-reducing conditions (right to MW markers). Following SDS-PAGE, proteins were transferred to nitrocellulose membrane and incubated with 2 µg/ml of biotinylated mouse anti-alpha-tubulin monoclonal antibody followed by IRDye800-conjugated streptavidin.