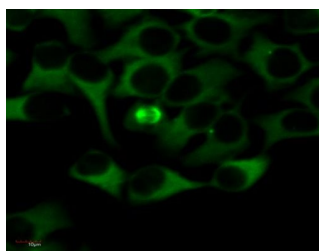


Product no **AS21 4626****Anti-Tubulin alpha chain, FITC conjugated (clone TU-01)****Product information**

Immunogen	Fraction of tubulin purified from porcine brain by two cycles of polymerization - depolymerization,
Host	Mouse
Clonality	Monoclonal
Subclass/isotype	IgG1
Purity	Conjugated with fluorescein isothiocyanate (FITC) under optimum conditions. The conjugate is purified by size-exclusion chromatography.
Format	Liquid at 1 mg/ml.
Quantity	0.1 mg
Storage	Store in the dark at 2-8°C. Do not freeze. Avoid prolonged exposure to light. Do not use after expiration date stamped on vial label. Please remember to spin the tubes briefly prior to opening them to avoid any losses that might occur from material adhering to the cap or sides of the tube.
Additional information	This antibody is recognizing a defined epitope (aa 65-97) on N-terminal structural domain of alpha-tubulin 1, UniProt: Q71U36

Application information

Recommended dilution	1-4 µg/ml (Flowcyt)
Expected apparent MW	50 54 kDa
Confirmed reactivity	<i>Arabidopsis thaliana</i> , <i>Eisenia</i> , <i>Nicotiana tabacum</i> , <i>Paramecium</i> , <i>Saccharomyces cerevisiae</i> , human, mouse, pig, turkey
Predicted reactivity	Species of your interest not listed? Contact us
Selected references	To be added when available, antibody released in October 2021.



HeLa cells stained with alpha tubulin monoclonal antibodies, conjugated with FITC.