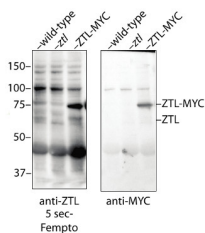


Product no **AS13 2662****Anti-ZTL (ADO1) | Zeitlupe (Adagio protein 1)****Product information**

Immunogen	KLH-conjugated synthetic peptide derived from <i>Arabidopsis thaliana</i> ZTL1 protein sequence, UniProt: Q94BT6 , TAIR: AT5G57360
Host	Rabbit
Clonality	Polyclonal
Purity	Immunogen affinity purified serum in PBS pH 7.4.
Format	Lyophilized
Quantity	50 µg
Reconstitution	For reconstitution add 50 µl of sterile water
Storage	Store lyophilized/reconstituted at -20°C; once reconstituted make aliquots to avoid repeated freeze-thaw cycles. Please remember to spin the tubes briefly prior to opening them to avoid any losses that might occur from material adhering to the cap or sides of the tube.

Application information

Recommended dilution	1 : 1000 (WB)
Expected apparent MW	65.9 kDa
Confirmed reactivity	<i>Arabidopsis thaliana</i>
Predicted reactivity	<i>Hordeum vulgare</i>
	Species of your interest not listed? Contact us
Not reactive in	<i>Glycine max</i> , <i>Nicotiana tabacum</i>

Application example

80 µg of *Arabidopsis thaliana* total protein were loaded per lane, samples taken at ZT 12 (12 h after lights are on in a 12 h light : 12 h dark growth regime, 22°C constant temperature). Samples were separated on 10 % SDS-PAGE and blotted for 1 h to PVDF using semi-dry transfer. Blot was blocked in for 1 h in 5% non-fat milk at room temperature (RT) with agitation and incubated at 1:1000 dilution of a primary antibody over night in PBST-2% BSA, followed by a secondary antibody incubation at 1:5000 dilution for 1 hour (Agrisera, [AS09 602](#)). All washes were done in PBST. Reaction was developed with chemiluminescent detection reagent of highest sensitivity.

Courtesy of Dr. Dmitri Nusinow, Danforthcenter, USA