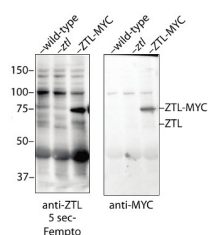


Product no **AS13 2662****Anti-ZTL (ADO1) | Zeitleupe (Adagio protein 1)****Product information**

<b>Immunogen</b>	KLH-conjugated synthetic peptide derived from <i>Arabidopsis thaliana</i> ZTL1 protein sequence, UniProt: <a href="#">Q94BT6</a> , TAIR: <a href="#">AT5G57360</a>
<b>Host</b>	Rabbit
<b>Clonality</b>	Polyclonal
<b>Purity</b>	Immunogen affinity purified serum in PBS pH 7.4.
<b>Format</b>	Lyophilized
<b>Quantity</b>	50 µg
<b>Reconstitution</b>	For reconstitution add 50 µl of sterile water
<b>Storage</b>	Store lyophilized/reconstituted at -20 °C; once reconstituted make aliquots to avoid repeated freeze-thaw cycles. Please remember to spin the tubes briefly prior to opening them to avoid any losses that might occur from material adhering to the cap or sides of the tube.

**Application information**

<b>Recommended dilution</b>	1 : 1000 (WB)
<b>Expected   apparent MW</b>	65.9 kDa
<b>Confirmed reactivity</b>	<i>Arabidopsis thaliana</i>
<b>Predicted reactivity</b>	<i>Hordeum vulgare</i>
	Species of your interest not listed? <a href="#">Contact us</a>
<b>Not reactive in</b>	<i>Glycine max</i> , <i>Nicotiana tabacum</i>

**Application example**

80 µg of *Arabidopsis thaliana* total protein were loaded per lane, samples taken at ZT 12 (12 h after lights are on in a 12 h light : 12 h dark growth regime, 22 °C constant temperature). Samples were separated on 10 % SDS-PAGE and blotted for 1 h to PVDF using semi-dry transfer. Blot was blocked in for 1 h in 5% non-fat milk at room temperature (RT) with agitation and incubated at 1:1000 dilution of a primary antibody over night in PBST-2% BSA, followed by a secondary antibody incubation at 1:5000 dilution for 1 hour (Agrisera, [AS09 602](#)). All washes were done in PBST. Reaction was developed with chemiluminescent detection reagent of highest sensitivity.

Courtesy of Dr. Dmitri Nusinow, Danforthcenter, USA